



HIGHEND THROTTLE

高端转把产品目录册

2027

PRODUCT CATALOGUE

STAR UNION
WUXING

GLOBAL FOOTPRINT



MORE THAN SALES

Global After-sales Sites 全球售后中心

Jiande Wuxing Bicycle Co., Ltd. (Group) 建德市五星车业有限公司 (总公司)

地址：浙江省建德市梅城镇城南工业功能区众悦路1号
ADD: No.1, Zhongyue Road, Chengnan Industrial district, Meicheng town, Jiande City, Zhejiang Province, China
TEL : 86(0)571-5831 9944 ZIP : 311604

Zhejiang Office 浙江办事处

地址：浙江省永康市黄城里15街37号
ADD: No. 37, 15th Street, Huangchengli, Yongkang City, Zhejiang Province, China
TEL : 86-13758973902 ZIP : 321300

Jiangsu Office 江苏办事处

地址：江苏省无锡市锡山区羊尖镇廊下锡苑路20号
ADD: No. 20, Langxia Xiwan Road, Yangjian Town, Xishan District, Wuxi City, Jiangsu Province, China
TEL : 86-13735443999 ZIP : 214100

Tianjin Office 天津办事处

地址：天津市北辰区津永公路津峰标准件厂 (五星仓库)
ADD: Jinfeng Standard Parts Factory, Jinyong Road, Tianjin Beichen District, Wuxing Warehouse, China
TEL : 86-13612184216 ZIP : 300401

Guangdong Office 广东办事处

地址：广东省东莞市长安镇东门中路鑫伟润工业园A栋1楼
ADD: 1st Floor, Building A, Xinweirun Industrial Park, Dongmen Middle Road, Chang'an Town, Dongguan City, Guangdong Province, China
TEL : 86-15657901066 ZIP : 523000

Taiwan Office 臺灣辦事處

地址：407 臺中市西屯區惠來路三段198之1號7樓之2
ADD: 7F.-2, No.198-1, Sec.3, Huilai Rd., Xitun Dist., Taichung City, 407368, Taiwan
TEL : Carol (+886-952225167) / Sophia (+886-963806898) ZIP : 40749

German Subsidiary: Starunion E-Bike Components GmbH

Am Sägewerk 1 | 55124 | Mainz | Germany
TEL: + 49 (0) 6131 5866439
Mobile: + 49(0)172 2329066
ZIP : 55124

USA Office

ADD: Irvine, CA
TEL: Cash (+17865783570)
ZIP : 92610

COMPANY PROFILE

- Established in 1985, entered bicycle industry in 1992.
- Engaged in design, manufacturing and marketing of electric bicycle parts and components since 1997.
- "Star Union" established in 2010 as independent high-end business division with specialized teams for research, marketing and production.
- Two manufacturing bases, four brands, over 1200 employees.
- Products include electric bicycles, mini e-scooters, GB e-bikes, and electric motorcycles.
- Over 300 patented inventions.

- 成立于 1985 年，1992 年进军自行车领域。
- 1997 年专注于电动自行车零部件的设计研发、生产制造与营销。
- 2010 年成立高端事业部，完全独立的研产销团队、全新优化的配套体系，以欧美标准为定位服务于一线品牌。
- 两大制造基地，四大品牌，员工 1200 余人。
- 产品包括电动助力自行车、迷你电动滑板车、国标电动自行车、电动自行车、摩托车。
- 300 多项专利发明。

40+

公司成立至今 40 余年
40 Years of History

300+

专利数量 300 余项
More Than 300 Patents

1200

员工人数 1200 余人
1,200 Employees

140000

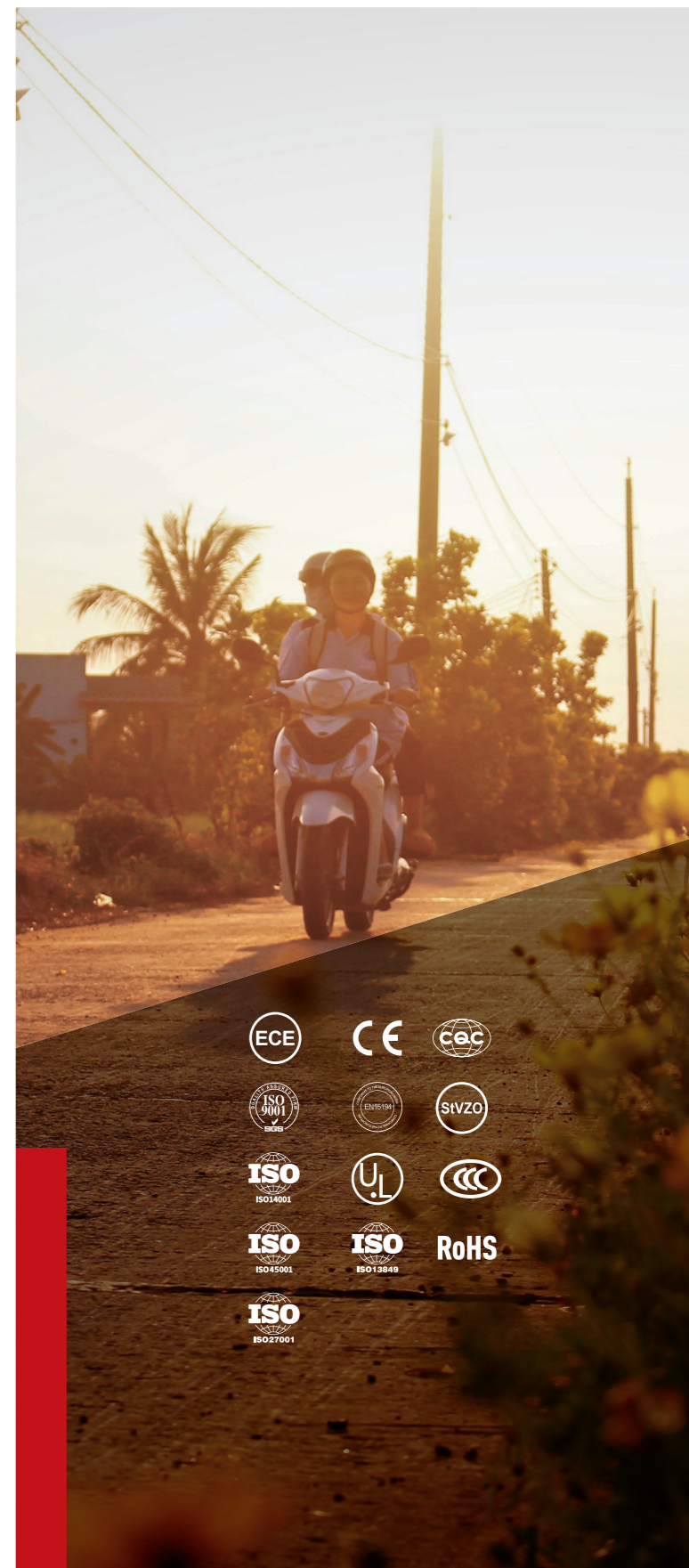
占地面积 140000 余平
Floor Space



DECLARATION OF CONFORMITY

- Complies with CQC, RoHS, CCC, CE, ECE R149/R148, German road traffic permit regulations.
- Ability to carry out testing services and independent products in accordance with accreditation criteria and capabilities.
- Products include Hall handles, grips, electric controllers, brake levers, meters, headlights, taillights, and motors.
- Some national standard headlights, taillights, and motors have obtained 3C certification.
- Mid-mounted motor, Topology display instruments, headlights, and taillights have obtained CE certification.

- 符合中国质量认证中心 CQC 认证；针对由欧盟实施的《电气电子设备中限制使用某些有害物质指令》RoHS 指令；符合 RoHS 标准的产品有霍尔转把、电控器、液压刹把、仪表、车灯。
- 符合国家强制性安全 CCC 认证；目前部分国标车灯、尾灯、已获得 3C 认证。
- 获得由欧盟指定机构的 CE 认证证书、目前中置电机、Topology 显示仪表、车前灯、尾灯已获得 CE 认证；车灯及反光片产品，符合欧盟指令 前灯 ECE R149、信号灯 R148 认证要求；前灯、尾灯或反光片符合德国道路交通许可规范。





BRAND ADVANTAGES

品牌优势



Outstanding Development Capabilities 出色的研发能力

40 years of profound technical expertise combined with a top-tier R&D team composed of numerous PhDs.
40 年深厚的技术积累，结合众多博士组成的顶级研发团队。



Management System 管理体系

Passed CCC, E-Mark, CE, K-MarK, RoHs, EN15194 and other product certifications and ISO9001-2015 and other management system certifications.
通过 CCC、E-Mark、CE、K-MarK、RoHS、EN15194 等产品认证及 ISO9001-2015 等管理体系认证。



Lean Digital Manufacturing 精益数智化制造

Implement digital upgrades, promote CNC automated precision manufacturing and intelligent testing equipment, and achieve comprehensive improvement of factory intelligence.
实施数字化升级，推进 CNC 自动化精密制造和智能检测设备，实现工厂智能化的全面提升。



A Strong Engineering Team 强大的工程师团队

A strong team of approximately 140 engineers, covering mechanical engineering, electronic hardware, electronic software, optics, motor design, industrial design, and process engineering.
约 140 人的强大工程师团队，涵盖机械工程、电子硬件、电子软件、光学、电机设计、工业设计、工艺工程等领域。



Manufacturing Capabilities and Scale 强大的自主生产能力与规模

Covering aluminum die-casting, plastic and rubber injection molding, automatic polishing, painting, powder coating, mold manufacturing, and automated assembly. Strong in-house manufacturing capabilities and scale. Covering aluminum die-casting, plastic and rubber injection molding, automatic polishing, painting, powder coating, mold manufacturing, and automated assembly.
涵盖：铝压铸、塑料及橡胶注塑、自动抛光、喷涂、喷塑、模具制造及自动化组装。



Global Patents 全球专利

It has more than 300 patents for inventions, utility models, and appearance. Its product design and quality are far ahead of domestic competitors.
拥有发明、实用新型、外观等专利 300 余项。产品设计与品质遥遥领先于国内竞争厂商。



Manufacturing and Quality 制造与品控

The core components of highly integrated automation equipment are all independently processed Full-level inspection and quality control/PLM system tracking
高集成度自动化设备核心部件均为自主加工
全工序级别的全检品控 / PLM 系统追踪。

EA200

高端转把



IPX7 Waterproof ability

Excellent waterproof performance for riding in various scenes



DUAL HALLS WITH STABLE QUALITY

Industrial grade twist accuracy with Bering structure



EA200.R+HT530



双霍尔掉地为零设计，保护行车安全；轴承结构，工业级的回转精度；人体工程设计，操作更舒适；转把的使用寿命大于15万次；达到IPX7级防水性能；硅胶把套，触感更好；EMC电磁兼容性设计，电磁环境可靠运行；

Safety Dual Hall sensors designing and Runaway Prevention Technology; Industrial grade twist accuracy with Bering structure; Ergonomic design for more comfortable operation; Service life > 150,000 times; IPX7 waterproof ability; Silicon grip with soft hand feeling; EMC electromagnetic compatibility design, reliable operation in electromagnetic environment.

标准 / Approval	RoHS / EMC / GB	电压 / Voltage	5V
尺寸 / Size	L153.6mm W68mm H58mm	工作温度 / Operating Temperature	-25°C ~ 65°C
重量 / Weight	140g	电线拉脱力 / Wire Tension	≥130N
防水 / Waterproof	IPX7	旋转角度 / Rotation Angle	0° ~ 70°
材料 / Material	Silicon (TPE)+PC/ABS	扭转强度 / Spin Intensity	≥9N.m
芯线 / Wiring	12 Core/8 Core cable	耐久性 / Durability	150,000 mating cycle

EA200.L+T530



采用优质合金原材料及电子元件，保证质量；开关手感轻盈舒适，按键功能可按需定制；达到IPX7级防水能力；把套材质可选（硅胶、TPE）；材料环保，RoHS认证。High-quality alloy raw materials and electronic components to ensure quality; Simple structure, reliable process, and stable performance; Light feeling and comfortable, Customized buttons; Achieve IPX7 waterproof capability; Material environmental protection, RoHS certification.

标准 / Approval	RoHS / EMC / GB	电流 / Current	12V/50mA
尺寸 / Size	L153mm W68mm H58mm	工作温度 / Operating Temperature	-25°C ~ 65°C
重量 / Weight	110g	电线拉脱力 / Wire Tension	≥130N
防水 / Waterproof	IPX7	车把尺寸 / Handlebar size	Φ22.2
材料 / Material	Silicon(TPE)	耐久性 / Durability	150,000 mating cycle
芯线 / Wiring	4 Core / 8 core wire		

E100X/4

高端转把



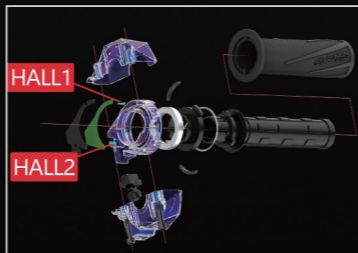
IPX7 Waterproof ability

Excellent waterproof performance for riding in various scenes



Dual halls with stable quality

Industrial grade twist accuracy with Bering structure



T530



E100X/4+HT530



FEATURES

- 采用优质合金原材料及电子元件，保证质量
- 结构简单、工艺可靠、性能稳定
- 双霍尔掉地为零设计，保护行车安全
- 右手转把内置轴承，功能稳定舒适
- 达到 IPX7 级防水能力
- 材料环保，RoHS 认证
- High-quality alloy raw materials and electronic components to ensure quality
- Simple structure, reliable process, and stable performance
- Safety Dual Hall sensors designing and Runaway Prevention Technology
- The right-hand handle has a built-in bearing, which provides stable and comfortable functionality
- Achieve IPX7 waterproof capability
- Material environmental protection, RoHS certification

标准 /Approval	RoHS / REACH	电压 /Voltage	5V
尺寸 /Size	L160mm W65.1mm H78.5mm	工作温度 /Operating Temperature	-25°C~ 65°C
重量 /Weight	195g	电线拉脱力 /Wire Tension	≥130N
防水 /Waterproof	IPX7	车把尺寸 /Handlebar size	Φ22.2
材料 /Material	Silicon(TPE)+ADC12	旋转强度 /Spin Intensity	≥9N.m
芯线 /Wiring	5 core cable	耐久性 /Durability	150,000 mating cycle

EA300

高端转把

THROTTLES

NEW

EA300R+HT530



- 采用优质合金原材料及电子元件，保证质量
- 结构简单、工艺可靠、性能稳定
- 铝合金固定环锁紧结构，操作便捷
- 达到 IPX6 级防水能力
- 材料环保，RoHS 认证
- High-quality alloy raw materials and electronic components to ensure quality
- Simple structure, reliable process, and stable performance
- Aluminum handlebar clamping loop with firm locking performance
- Achieve IPX6 waterproof capability
- Material environmental protection, RoHS certification

标准 / Approval	RoHS / REACH	芯线 / Wiring	7 Core cable
尺寸 / Size	L181mm W81mm H68mm	开关电流 / 电压 / Voltage	12V/50mA
重量 / Weight	180g	工作温度 / Operating Temperature	-25°C ~ 65°C
防水 / Waterproof	IPX6	电线拉脱力 / Wire Tension	≥130N
材料 / Material	PC+ABS	耐久性 / Durability	100,000 mating cycle



EA300L+T530

NEW



- 采用优质合金原材料及电子元件，保证质量
- 结构简单、工艺可靠、性能稳定
- 铝合金固定环锁紧结构，操作便捷
- 达到 IPX6 级防水能力
- 材料环保，RoHS 认证
- High-quality alloy raw materials and electronic components to ensure quality
- Simple structure, reliable process, and stable performance
- Aluminum handlebar clamping loop with firm locking performance
- Achieve IPX6 waterproof capability
- Material environmental protection, RoHS certification

标准 / Approval	RoHS / REACH	芯线 / Wiring	4 Core cable
尺寸 / Size	L61mm W81mm H68mm	开关电流 / 电压 / Voltage	12V/50mA
重量 / Weight	105g	工作温度 / Operating Temperature	-25°C ~ 65°C
防水 / Waterproof	IPX6	电线拉脱力 / Wire Tension	≥130N
材料 / Material	PC+ABS	耐久性 / Durability	100,000 mating cycle



E106X

高端转把



IPX7

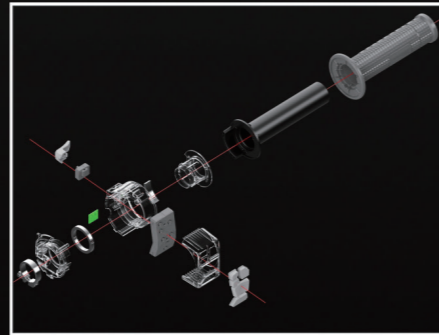
Waterproof ability

Excellent waterproof performance for riding in various scenes



Built-in bearing

Which provides stable and comfortable functionality



T530



E106X+HT530



可选配 T530/2 通孔版

FEATURES

- 采用优质合金原材料及电子元件，保证质量
- 结构简单、工艺可靠、性能稳定
- 双霍尔掉地为零设计，保护行车安全
- 右手转把内置轴承，功能稳定舒适
- 达到 IPX7 级防水能力
- 材料环保，RoHS 认证
- High-quality alloy raw materials and electronic components to ensure quality
- Simple structure, reliable process, and stable performance
- Safety Dual Hall sensors designing and Runaway Prevention Technology
- The right-hand handle has a built-in bearing, which provides stable and comfortable functionality
- Achieve IPX7 waterproof capability
- Material environmental protection, RoHS certification

标准 /Approval	RoHS / REACH	电压 /Voltage	5V
尺寸 /Size	L158mm W50mm H61mm	工作温度 /Operating Temperature	-25°C~ 65°C
重量 /Weight	157g	电线拉脱力 /Wire Tension	≥130N
防水 /Waterproof	IPX7	车把尺寸 /Handlebar size	Φ22.2
材料 /Material	Silicon (TPE)+ADC12	旋转强度 /Spin Intensity	≥9N.m
芯线 /Wiring	4 core /6 core cable	耐久性 /Durability	100,000 mating cycle

T572



E106X/2+HT572



可选配 T530/2 通孔版

FEATURES

- 采用优质合金原材料及电子元件，保证质量
- 结构简单、工艺可靠、性能稳定
- 双霍尔掉地为零设计，保护行车安全
- 右手转把内置轴承，功能稳定舒适；
- 达到 IPX7 级防水能力
- 材料环保，RoHS 认证
- High-quality alloy raw materials and electronic components to ensure quality
- Simple structure, reliable process, and stable performance
- Safety Dual Hall sensors designing and Runaway Prevention Technology
- The right-hand handle has a built-in bearing, which provides stable and comfortable functionality;
- Achieve IPX7 waterproof capability
- Material environmental protection, RoHS certification

标准 /Approval	RoHS / REACH	电压 /Voltage	5V
尺寸 /Size	L136mm W50mm H61mm	工作温度 /Operating Temperature	-25°C~ 65°C
重量 /Weight	141g	电线拉脱力 /Wire Tension	≥130N
防水 /Waterproof	IPX7	车把尺寸 /Handlebar size	Φ18
材料 /Material	Silicon (TPE)+ADC12	旋转强度 /Spin Intensity	≥9N.m
芯线 /Wiring	4 core /6 core cable	耐久性 /Durability	100,000 mating cycle

E110X

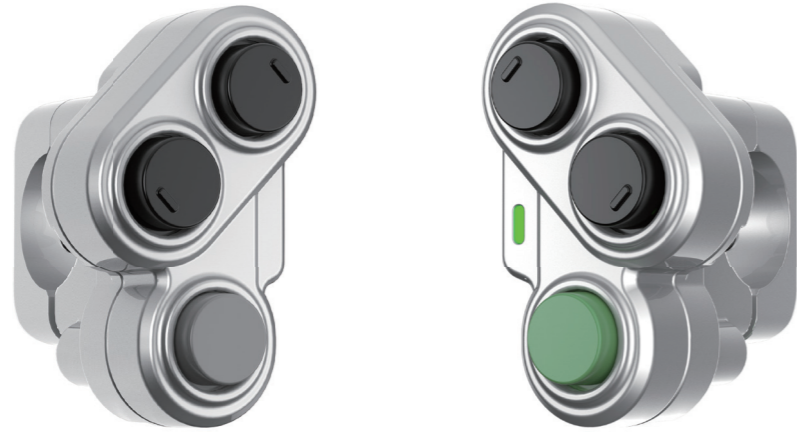


FEATURES

- 采用优质合金原材料及电子元件，保证质量
- 结构简单、工艺可靠、性能稳定
- 铝合金固定环锁紧结构，操作便捷
- 达到 IPX6 级防水能力
- 材料环保，RoHS 认证
- High-quality alloy raw materials and electronic components to ensure quality
- Simple structure, reliable process, and stable performance
- Aluminum handlebar clamping loop with firm locking performance
- Achieve IPX6 waterproof capability
- Material environmental protection, RoHS certification

标准 /Approval	RoHS / REACH	芯线 /Wiring	4 Core cable
尺寸 /Size	L61mm W81mm H68mm	开关电流 / 电压 / Voltage	12V/50mA
重量 /Weight	105g	工作温度 /Operating Temperature	-25°C~ 65°C
防水 /Waterproof	IPX6	电线拉脱力 /Wire Tension	≥130N
材料 /Material	PC+ABS	耐久性 /Durability	100,000 mating cycle

EDK200L/R

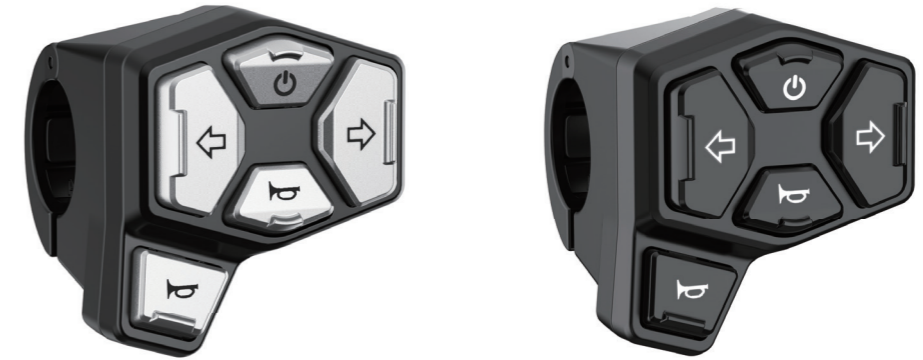


客户定制

- 采用优质合金原材料及电子元件，保证质量
 - 结构简单、工艺可靠、性能稳定
 - 开放式锁紧结构，操作便捷
 - 开关手感清脆舒适，按键功能可按需定制
 - 达到 IPX6 级防水能力
 - 材料环保，RoHS 认证
- High-quality CNC alloy raw materials and electronic components to ensure quality
 - Simple structure, reliable process, and stable performance
 - Open locking structure, easy to operate
 - Light feeling and comfortable, Customized buttons
 - Achieve IPX6 waterproof capability
 - Material environmental protection, Rosh certification

标准 /Approval	RoHS / REACH	开关电流 / 电压 /Voltage	12V/50mA
尺寸 /Size	L63mm W40mm H58mm	工作温度 /Operating Temperature	-25°C~ 65°C
重量 /Weight	90g	电线拉脱力 /Wire Tension	≥60N
防水 /Waterproof	IPX6	车把尺寸 /Handlebar size	Φ22.2
材料 /Material	Aluminum alloy + ABS	耐久性 /Durability	100,000 mating cycle
芯线 /Wiring	4 core /7 core cable		

DK558



客户定制

- 采用优质合金原材料及电子元件，保证质量
 - 结构简单、工艺可靠、性能稳定
 - 开放式锁紧结构，操作便捷
 - 开关手感清脆舒适，按键功能可按需定制
 - 达到 IPX6 级防水能力
 - 材料环保，RoHS 认证
- High-quality alloy raw materials and electronic components to ensure quality
 - Simple structure, reliable process, and stable performance
 - Open locking structure, easy to operate
 - Light feeling and comfortable, Customized buttons
 - Achieve IPX6 waterproof capability
 - Material environmental protection, Rosh certification

标准 /Approval	RoHS / REACH	开关电流 / 电压 /Voltage	12V/50mA
尺寸 /Size	L57mm W52mm H56mm	工作温度 /Operating Temperature	-25°C~ 65°C
重量 /Weight	48g	电线拉脱力 /Wire Tension	≥130N
防水 /Waterproof	IPX6	车把尺寸 /Handlebar size	Φ22.2
材料 /Material	PC+ABS	耐久性 /Durability	100,000 mating cycle
芯线 /Wiring	6 core cable		

EDK100



客户定制

- 采用优质合金原材料及电子元件，保证质量
 - 结构简单、工艺可靠、性能稳定
 - 开放式锁紧结构，操作便捷
 - 开关手感清脆舒适，按键功能可按需定制
 - 达到 IPX6 级防水能力
 - 材料环保，RoHS 认证
- High-quality alloy raw materials and electronic components to ensure quality
 - Simple structure, reliable process, and stable performance
 - Open locking structure, easy to operate
 - Light feeling and comfortable, Customized buttons
 - Achieve IPX6 waterproof capability
 - Material environmental protection, Rosh certification

标准 /Approval	RoHS / REACH	开关电流 / 电压 /Voltage	12V/50mA
尺寸 /Size	L55mm W35mm H68mm	工作温度 /Operating Temperature	-25°C~ 65°C
重量 /Weight	65g	电线拉脱力 /Wire Tension	≥130N
防水 /Waterproof	IPX6	车把尺寸 /Handlebar size	Φ22.2
材料 /Material	PC+ABS	耐久性 /Durability	100,000 mating cycle
芯线 /Wiring	9 core cable		

T588

NEW



- 铝合金固定环锁紧结构，操作便捷
- 结构简单、工艺可靠、性能稳定
- 符合人体工程操作，手感轻盈、舒适
- 材料环保，RoHS 认证
- High strength plastic shell, light, Durable
- Simple structure, reliable technology, stable performance
- Conforming to ergonomic operation, light and comfortable
- Environmental, and RoHS certification

标准 /Approval	RoHS / REACH	材料 /Material	PP+TPE
尺寸 /Size	L120mm W31mm H31mm	工作温度 /Operating Temperature	-25°C~ 65°C
重量 /Weight	46g	拉脱力 /Pulling-out Force	≥150N

DG568

NEW



DG568/2

- 采用优质铝合金 + 软胶材料，保证质量
- 结构简单、工艺可靠、性能稳定
- 材料环保，RoHS 认证
- Crafted with premium aluminum alloy and soft rubber to ensure top-tier quality
- Simple structure, reliable technology, stable performance
- Environmental, and RoHS certification

标准 /Approval	RoHS / REACH	材料 /Material	Aluminum alloy
尺寸 /Size	L56mm W28mm H28mm	工作温度 /Operating Temperature	-25°C~ 65°C
重量 /Weight	40g	拉脱力 /Pulling-out Force	≥150N

T588/2

NEW



- 铝合金固定环锁紧结构，操作便捷
- 结构简单、工艺可靠、性能稳定
- 符合人体工程操作，手感轻盈、舒适
- 材料环保，RoHS 认证
- High strength plastic shell, light, Durable
- Simple structure, reliable technology, stable performance
- Conforming to ergonomic operation, light and comfortable
- Environmental, and RoHS certification

标准 /Approval	RoHS / REACH	材料 /Material	PP+Silicon 硅胶
尺寸 /Size	L120mm W31mm H31mm	工作温度 /Operating Temperature	-25°C~ 65°C
重量 /Weight	48g	拉脱力 /Pulling-out Force	≥150N

E100X/4

NEW



- 采用优质软胶材料，保证质量
- 结构简单、工艺可靠、性能稳定
- 材料环保，RoHS 认证
- High-quality soft rubber material for guaranteed durability
- Simple structure, reliable technology, stable performance
- Environmental, and RoHS certification

标准 /Approval	RoHS / REACH	材料 /Material	PVC 85A
尺寸 /Size	L20mm W32mm H32mm	工作温度 /Operating Temperature	-25°C~ 65°C
重量 /Weight	10g		



关注我们

建德市五星车业有限公司

JIANDE WUXING BICYCLE CO., LTD.

地址：中国浙江省建德市梅城镇城南工业功能区众悦路1号
ADD: No.1 Zhongyue Road, Chengnan Industrial Zone, Meicheng Town, Jiande City, Zhejiang Province.China
TEL: 86(0)571-5831 9944
FAX: 86(0)571-5831 9948

GERMAN SUBSIDIARY:
Starunion E-Bike Components GmbH
Am Sägewerk 1 | 55124 | Mainz | Germany
TEL: + 49 (0) 6131 5866439
Mobile: + 49(0)172 2329066

Email: service@star-union.net
info@star-union.net
Web: <https://www.star-union.net>



电动两轮零件专家