



LIGHT

车灯产品目录册

2027

PRODUCT CATALOGUE

STAR UNION
WUXING

GLOBAL FOOTPRINT



MORE THAN SALES

Global After-sales Sites 全球售后中心

Jiande Wuxing Bicycle Co., Ltd. (Group) 建德市五星车业有限公司 (总公司)

地址：浙江省建德市梅城镇城南工业功能区众悦路1号
ADD: No.1, Zhongyue Road, Chengnan Industrial district, Meicheng town, Jiande City, Zhejiang Province, China
TEL: 86(0)571-5831 9944 ZIP: 311604

Zhejiang Office 浙江办事处

地址：浙江省永康市黄城里15街37号
ADD: No. 37, 15th Street, Huangchengli, Yongkang City, Zhejiang Province, China
TEL: 86-13758973902 ZIP: 321300

Jiangsu Office 江苏办事处

地址：江苏省无锡市锡山区羊尖镇廊下锡苑路20号
ADD: No. 20, Langxia Xiwan Road, Yangjian Town, Xishan District, Wuxi City, Jiangsu Province, China
TEL: 86-13735443999 ZIP: 214100

Tianjin Office 天津办事处

地址：天津市北辰区津永公路津峰标准件厂 (五星仓库)
ADD: Jinfeng Standard Parts Factory, Jinyong Road, Tianjin Beichen District, Wuxing Warehouse, China
TEL: 86-13612184216 ZIP: 300401

Guangdong Office 广东办事处

地址：广东省东莞市长安镇东门中路鑫伟润工业园A栋1楼
ADD: 1st Floor, Building A, Xinweirun Industrial Park, Dongmen Middle Road, Chang'an Town, Dongguan City, Guangdong Province, China
TEL: 86-15657901066 ZIP: 523000

Taiwan Office 臺灣辦事處

地址：407 臺中市西屯區惠來路三段198之1號7樓之2
ADD: 7F.-2, No.198-1, Sec.3, Huilai Rd., Xitun Dist., Taichung City, 407368, Taiwan
TEL: Carol (+886-952225167) / Sophia (+886-963806898) ZIP: 40749

German Subsidiary: Starunion E-Bike Components GmbH

Am Sägewerk 1 | 55124 | Mainz | Germany
TEL: + 49 (0) 6131 5866439
Mobile: + 49(0)172 2329066
ZIP: 55124

USA Office

ADD: Irvine, CA
TEL: Cash (+17865783570)
ZIP: 92610

COMPANY PROFILE

- Established in 1985, entered bicycle industry in 1992.
- Engaged in design, manufacturing and marketing of electric bicycle parts and components since 1997.
- "Star Union" established in 2010 as independent high-end business division with specialized teams for research, marketing and production.
- Two manufacturing bases, four brands, over 1200 employees.
- Products include electric bicycles, mini e-scooters, GB e-bikes, and electric motorcycles.
- Over 300 patented inventions.

- 成立于 1985 年，1992 年进军自行车领域。
- 1997 年专注于电动自行车零部件的设计研发、生产制造与营销。
- 2010 年成立高端事业部，完全独立的研产销团队、全新优化的配套体系，以欧美标准为定位服务于一线品牌。
- 两大制造基地，四大品牌，员工 1200 余人。
- 产品包括电动助力自行车、迷你电动滑板车、国标电动自行车、电动自行车、摩托车。
- 300 多项专利发明。

40+

公司成立至今 40 余年
40 Years of History

300+

专利数量 300 余项
More Than 300 Patents

1200

员工人数 1200 余人
1,200 Employees

140000

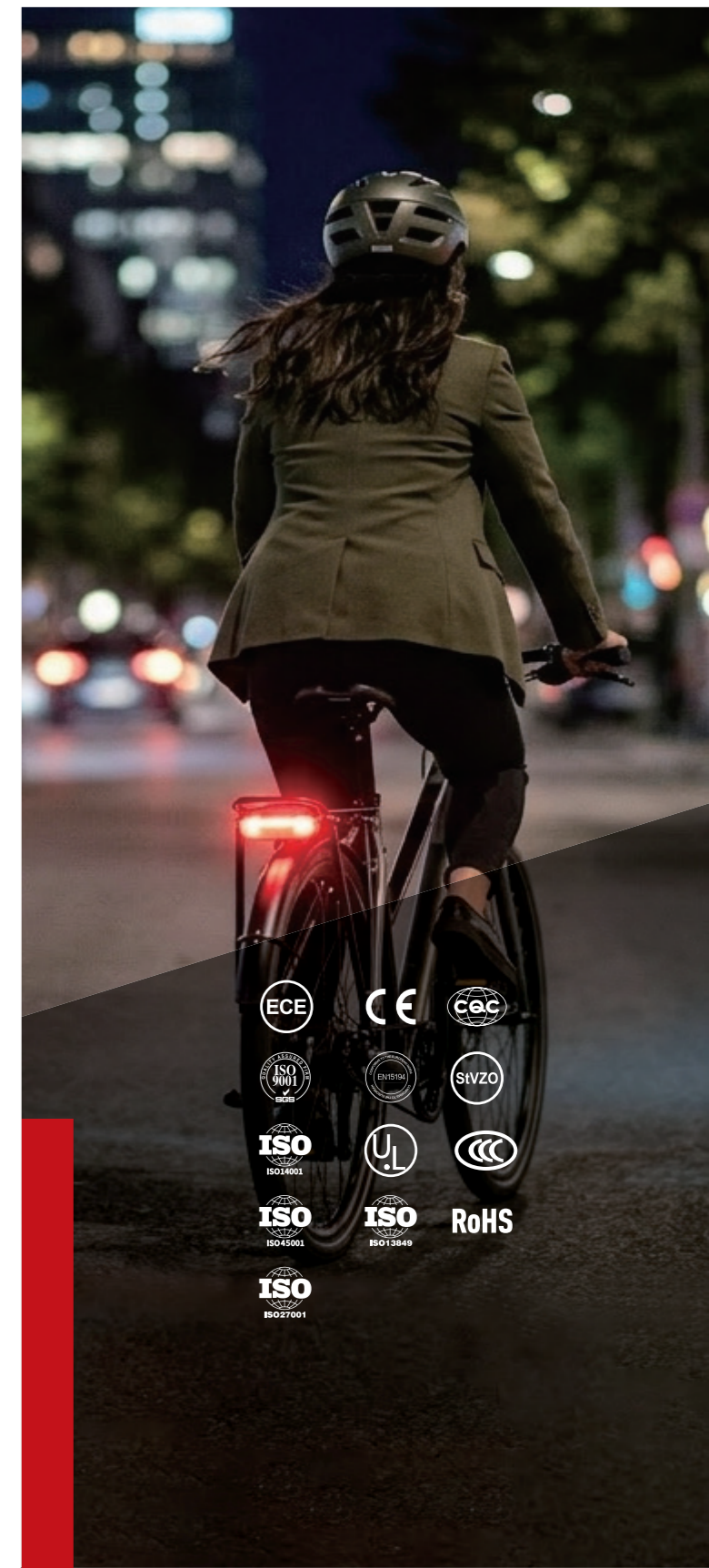
占地面积 140000 余平
Floor Space



DECLARATION OF CONFORMITY

- Complies with CQC, RoHS, CCC, CE, ECE R149/R148, German road traffic permit regulations.
- Ability to carry out testing services and independent products in accordance with accreditation criteria and capabilities.
- Products include Hall handles, grips, electric controllers, brake levers, meters, headlights, taillights, and motors.
- Some national standard headlights, taillights, and motors have obtained 3C certification.
- Mid-mounted motor, Topology display instruments, headlights, and taillights have obtained CE certification.

- 符合中国质量认证中心 CQC 认证；针对由欧盟实施的《电气电子设备中限制使用某些有害物质指令》RoHS 指令；符合 RoHS 标准的产品有霍尔转把、电控器、液压刹把、仪表、车灯。
- 符合国家强制性安全 CCC 认证；目前部分国标车灯、尾灯、已获得 3C 认证。
- 获得由欧盟指定机构的 CE 认证证书、目前中置电机、Topology 显示仪表、车前灯、尾灯已获得 CE 认证；车灯及反光片产品，符合欧盟指令 前灯 ECE R149、信号灯 R148 认证要求；前灯、尾灯或反光片符合德国道路交通许可规范。





BRAND ADVANTAGES

品牌优势



Outstanding Development Capabilities 出色的研发能力

40 years of profound technical expertise combined with a top-tier R&D team composed of numerous PhDs.
40 年深厚的技术积累，结合众多博士组成的顶级研发团队。



Management System 管理体系

Passed CCC, E-Mark, CE, K-MarK, RoHs, EN15194 and other product certifications and ISO9001-2015 and other management system certifications.
通过 CCC、E-Mark、CE、K-MarK、RoHS、EN15194 等产品认证及 ISO9001-2015 等管理体系认证。



Lean Digital Manufacturing 精益数智化制造

Implement digital upgrades, promote CNC automated precision manufacturing and intelligent testing equipment, and achieve comprehensive improvement of factory intelligence.
实施数字化升级，推进 CNC 自动化精密制造和智能检测设备，实现工厂智能化的全面提升。



A Strong Engineering Team 强大的工程师团队

A strong team of approximately 140 engineers, covering mechanical engineering, electronic hardware, electronic software, optics, motor design, industrial design, and process engineering.
约 140 人的强大工程师团队，涵盖机械工程、电子硬件、电子软件、光学、电机设计、工业设计、工艺工程等领域。



Manufacturing Capabilities and Scale 强大的自主生产能力与规模

Covering aluminum die-casting, plastic and rubber injection molding, automatic polishing, painting, powder coating, mold manufacturing, and automated assembly. Strong in-house manufacturing capabilities and scale. Covering aluminum die-casting, plastic and rubber injection molding, automatic polishing, painting, powder coating, mold manufacturing, and automated assembly.
涵盖：铝压铸、塑料及橡胶注塑、自动抛光、喷涂、喷塑、模具制造及自动化组装。



Global Patents 全球专利

It has more than 300 patents for inventions, utility models, and appearance. Its product design and quality are far ahead of domestic competitors.
拥有发明、实用新型、外观等专利 300 余项。产品设计与品质遥遥领先于国内竞争厂商。



Manufacturing and Quality 制造与品控

The core components of highly integrated automation equipment are all independently processed Full-level inspection and quality control/PLM system tracking
高集成度自动化设备核心部件均为自主加工
全工序级别的全检品控 /PLM 系统追踪。

LIGHTS



CONTENT

前灯
HEAD LIGHT 710-29

尾灯
REAR LIGHT 730-41

转向灯
TURN SIGNAL LIGHT 742-45

反射器
REFLECTOR 746

灯支架
LIGHT BRACKET 747-51

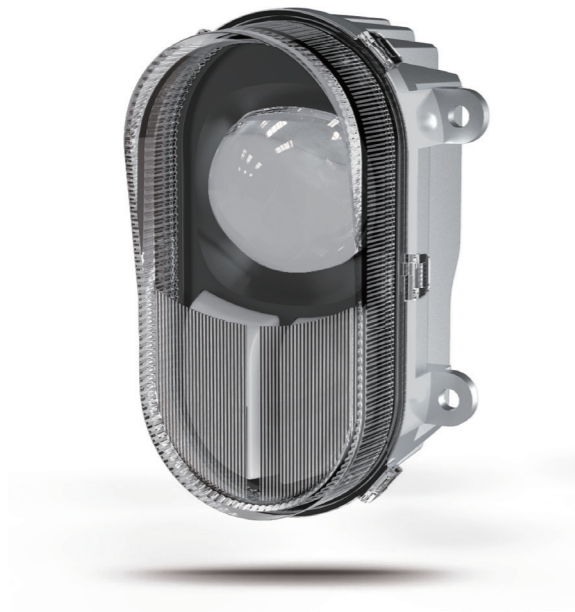
HEAD LIGHT

QD638



QD638 是一款前位置灯和近远光灯的多功能大灯，符合 ECE、DOT、3C 法规，适用于电轻摩车型，全铝后壳，IPX5 防水等级，性能稳定。
The QD638 is a multifunctional headlight designed for front position and low/high beams, complying with ECE, DOT, and 3C regulations. It is suitable for electric light motorcycle models, featuring an all-aluminum rear housing, IPX5 waterproof rating, and stable performance.

NEW



ECE E-mark DOT 3C

QD638

标准 / Approval	ECE Class B / DOT / 3C
尺寸 / Size	L118mm W76.5mm H84.5mm
重量 / Weight	280g
芯线 / Wiring	4 Pins
防水 / Waterproof	IPX5
标称电压 / Nominal Voltage	DC 12V
中心照度 / Center Luminance	近光灯 Low beam: 120LUX 远光灯 High beam: 290LUX
光源类型 / Light Source	LED
功率 / Power	位置灯 Position beam: 2W; 近光灯 Low beam: 6W; 远光灯 High beam: 6W

HEAD LIGHT

QD622



符合 K-mark 法规需求，专用的驱动芯片，输出更稳定；IPX5 防水等级认证，密封防水结构，性能稳定。
Complies with K-mark regulations, featuring a dedicated driver chip for more stable output; IPX5 waterproof certification with a sealed waterproof structure, ensuring stable performance.

NEW



svzO K-Mark ISO CE

QD622

标准 / Approval	svzO / ISO / CE
尺寸 / Size	L 62.7mm W 96mm H 190mm
重量 / Weight	166g
芯线 / Wiring	2 Pins
防水 / Waterproof	IPX5
标称电压 / Nominal Voltage	DC 12-48V
中心照度 / Center Luminance	近光 Low beam: 100LUX
光源类型 / Light Source	LED
功率 / Power	近光 Low beam: 4W

QD562



符合 ECE、ISO；采用高效透镜（远近光）、匀光件方案（前位置灯）；专用的驱动芯片，输出更稳定；适用出口助力自行车、电动自行车、电动摩托车等两轮三轮代步车。

Comply with ECE and ISO; The light distribution design scheme of high efficiency lens (low beam) and thick wall light guide (daytime running light); special driver chip to output more stable; It is suitable for bicycles, ebikes, motorcycles, two wheel and tricycles.



QD562



标准 / Approval	ISO / ECE ClassB / CE
尺寸 / Size	L130mm W130mm H75mm
材质 / Material	铝 AL、PC、硅胶、PC+ABS
重量 / Weight	343g
芯线 / Wiring	4 Pins
防水 / Waterproof	IPX5
标称电压 / Nominal Voltage	DC 12-48V
中心照度 / Center Luminance	近光 Low beam:80LUX ; 远光 High beam:220LUX
光源类型 / Light Source	LED
功率 / Power	近光 Low beam: 8W ; 远光 High beam: 9W ; 位置灯 Position beam:2W

QD598



QD598 是一款带前位置灯和近光灯的多功能大灯，符合 ISO 法规；采用优质的 LED 光源；高分贝陶瓷蜂鸣片，专用的驱动芯片，输出更稳定，悦耳的音质，目前有两个版本可选，满足整车客户对不同功能及成本的需求。

The QD598 is a multifunctional headlight with Position beam and low beam, compliant with ISO regulations; it uses high-quality LED light sources; features a high-decibel ceramic buzzer and a dedicated driver chip for more stable output and pleasant sound quality. Currently, there are two versions available to meet different functionality and cost requirements for the entire vehicle.



QD598

QD598-3

标准 / Approval	ISO	ISO
尺寸 / Size	L106mm W106mm H75mm	L106mm W106mm H75mm
重量 / Weight	340g	340g
芯线 / Wiring	3 Pins	2 Pins
防水 / Waterproof	IPX5	IPX5
标称电压 / Nominal Voltage	DC 12-48V	DC 12-48V
中心照度 / Center Luminance	近光灯 Low beam: 130LUX	近光灯 Low beam: 130LUX
光源类型 / Light Source	LED	LED
功率 / Power	近光灯 Low beam: 6.5W; 位置灯 Position beam:1.6W	近光灯 Low beam: 6.5W
喇叭分贝 /Horn Decibel	80±5dB	80±5dB
喇叭电压 /Horn Voltage	DC 48V	DC 48V

HEAD LIGHT

QD563



符合 ECE Class B 法规，是一款带位置灯、近光灯、远光灯的多功能大灯，采用优质 LED 光源和全铝外壳，保证亮度的同时满足 LED 的散热需求。
Compliant with ECE Class B regulations, it is a multifunctional headlight with position lights, low beams, and high beams, using high-quality LED light sources and an all-aluminum housing to ensure brightness while meeting the heat dissipation requirements of LEDs.



QD563



标准 / Approval	ECE class B / ISO / CE
尺寸 / Size	L132mm W70mm H54mm
重量 / Weight	340g
芯线 / Wiring	4 Pins
防水 / Waterproof	IPX5
标称电压 / Nominal Voltage	DC12-48V
中心照度 / Center Luminance	近光灯 Low beam:80LUX ; 远光灯 High beam: 220LUX
光源类型 / Light Source	LED
功率 / Power	近光 Low beam: 8W ; 远光 High beam: 9W ; 位置灯 Position beam:1W

HEAD LIGHT

QD560



高精度矩阵式三联透镜设计，近光 + 远光；高强度铝材鳞片式散热设计；采用进口驱动芯片，输入电压范围可达 12-60V；硬朗的外形设计适合越野车型；IPX5 防水等级认证，密封防水结构 性能稳定。
Three high precision matrix lens low beam+high beam; Strong aluminum shell scalelike thermal design; Imported light driven chips Input range is 12-60V; Advanced and strong appearance suitable for ATV bikes; IPX5 waterproof ability sealed waterproof structure with stable performance.



QD560



标准 / Approval	ECE class C / CE
尺寸 / Size	L110mm W65mm H68mm
重量 / Weight	400g
芯线 / Wiring	3 Pins
防水 / Waterproof	IPX5
标称电压 / Nominal Voltage	DC 12-48V / 72V
中心照度 / Center Luminance	近光灯 Low beam: 60LUX / 远光灯 High beam:270LUX
光源类型 / Light Source	LED
功率 / Power	近光 Low beam: 9W ; 远光 High beam:17W

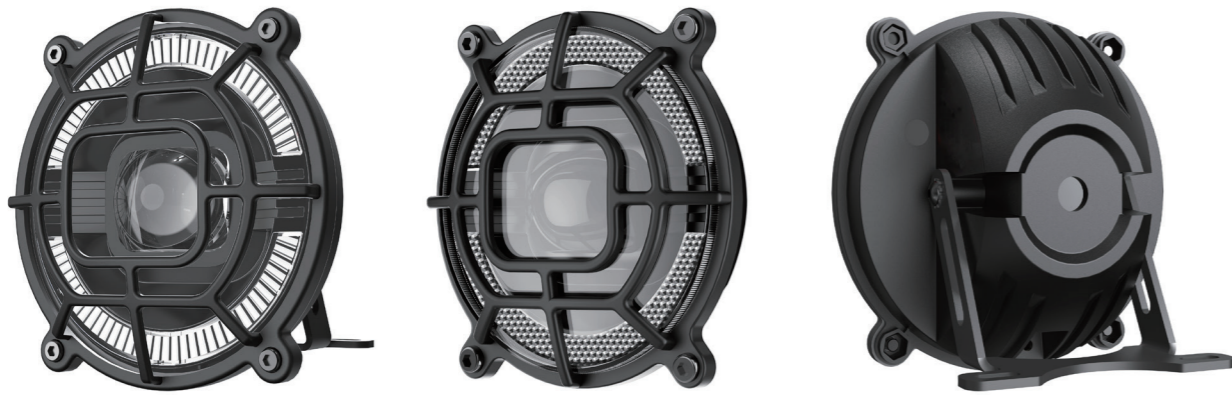
HEAD LIGHT

QD472



QD472 车灯是一款带日行灯、近光灯、远光灯的多功能前大灯，采用优质 LED 光源及全铝外壳，保证高亮度的同时满足 LED 的散热需求。目前有三个版本可选，满足整车厂对不同功能及成本的需求。

D472 light is a multi-function headlight with daytime light, low beam and high beam. It adopts high-quality LED light source and all-aluminum shell to ensure high brightness and meet the heat dissipation requirements of LED. There are currently three versions available to meet the needs of e-bike assembly factory for different functions and costs.



QD472

QD472-2

QD472-4

标准 / Approval	ECE Class B / CE	ECE Class B / CE	
尺寸 / Size	L145.1mm W98.3mm H145.1mm	L145.1mm W98.3mm H145.1mm	L145mm W145mm H116.5mm
重量 / Weight	173.5g	173.5g	173.5g
芯线 / Wiring	4 Pins+ 2 Pins	3 Pins+ 2 Pins	2 Pins
防水 / Waterproof	IPX5	IPX5	IPX5
标称电压 / Nominal Voltage	12V / 36-48V / 72V	12V / 36-48V / 72V	DC 48V
中心照度 / Center Luminance	近光 Low beam:100LUX ; 远光 High beam:230LUX	近光 Low beam:100LUX ; 远光 High beam:230LUX	近光 Low beam:60LUX
光源类型 / Light Source	LED	LED	LED
喇叭分贝 / Horn Decibel	80±5dB	80±5dB	80±5dB
喇叭电压 / Horn Voltage	12V / 36-48V / 72V	12V / 36-48V / 72V	DC 36-48V / 12V
功率 / Power	日行灯 11W; 近光灯 8.5W; 远光灯 8.5W Day beam 11W; Low beam 8.5W; High beam 8.5W	近光灯 8.5W 远光灯 8.5W Low beam 8.5W; High beam 8.5W	近光灯 5W Low beam 5W

HEAD LIGHT

QD526



采用优质 LED 光源及半铝外壳，保证高亮度的同时满足 LED 的散热需求；符合 ECE、ISO；采用高效透镜（近光）、厚壁光导（日行灯）配光设计方案；集合日行灯、近光灯和喇叭警示功能；采用高分贝陶瓷蜂鸣片，专用的驱动芯片，输出更稳定、悦耳的音质；反光片快速拆装设计；适用出口助力自行车、电动自行车、电动摩托车等两轮三轮代步车。

QD526 uses high-quality LED light source and semi-aluminum shell to ensure high brightness and meet the heat dissipation requirements; Comply with ECE and ISO; The light distribution design scheme of high efficiency lens (low beam) and thick wall light guide (daytime running light); It integrated the horn warning function , daytime running light and low beam light together; High decibel ceramic buzzer chip and special driver chip to output more stable and pleasant sound quality; Quick release and assembly design of reflector; It is suitable for bicycles, ebikes, motorcycles ,two wheel and tricycles.



QD526

QD526-2

QD526-3

QD526-4

标准 / Approval	ECE Class B / ISO / CE	ECE Class B / ISO / CE	ECE Class B / ISO / CE	ECE Class B / ISO / CE
尺寸 / Size	L62.7mm W96mm H190mm	L62.7mm W96mm H190mm	L62.7mm W96mm H190mm	L62.7mm W96mm H190mm
重量 / Weight	291g	248g	291g	248g
芯线 / Wiring	3 Pins	2 Pins	4 Pins	3 Pins
防水 / Waterproof	IPX5	IPX5	IPX5	IPX5
标称电压 / Nominal Voltage	DC 12-48V	DC 12-48V / 72V / 6V	DC 12-48V	DC 12-48V / 6V
功率 / Power	位置灯 Position beam:1.6W; 近光 Low beam:5W	近光灯 Low beam:5W	位置灯 Position beam:1.6W; 近光 Low beam:5W	近光灯 Low beam:5.5W
中心照度 / Center Luminance	80LUX	80LUX	80LUX	80LUX
光源类型 / Light Source	LED	LED	LED	LED
喇叭分贝 / Horn Decibel	×	×	80±5dB	80±5dB
喇叭电压 / Horn Voltage	×	×	DC 36-48V	DC 36-48V

HEAD LIGHT

QD576



采用优质的 LED 光源，输出更稳定。同时满足 ISO 法规，MINI 造型，全塑外壳，IPX5 防水等级认证，密封防水结构，性能稳定。
 Uses high-quality LED light source for more stable output. Complies with ISO regulations, features MINI design, all-plastic casing, IPX5 waterproof certification, and a sealed waterproof structure for stable performance.



QD576



标准 / Approval	ISO
尺寸 / Size	L60mm W46mm H46mm
重量 / Weight	47g
芯线 / Wiring	2 Pins
防水 / Waterproof	IPX5
标称电压 / Nominal Voltage	DC48V / 6-48V
中心照度 / Center Luminance	60LUX
光源类型 / Light Source	LED
功率 / Power	2.5W

HEAD LIGHT

QD522

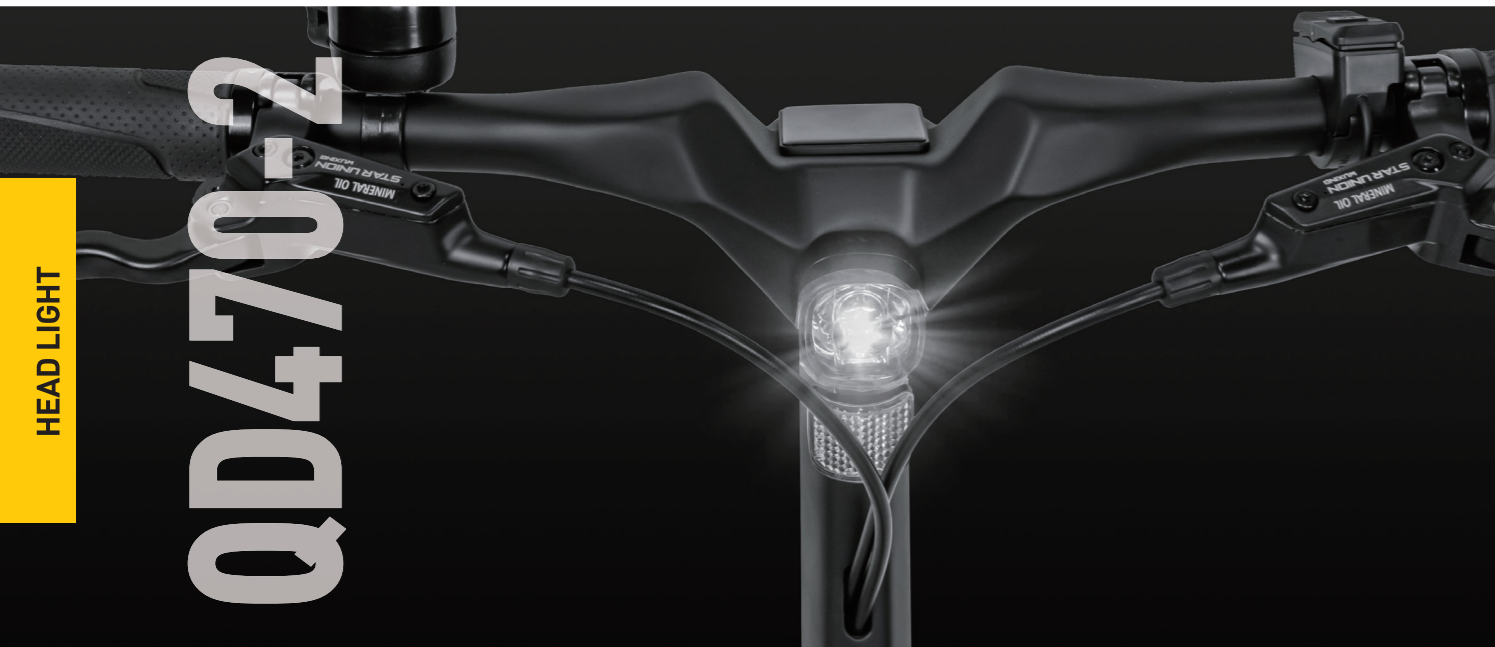


采用优质 LED 光源及半铝外壳，保证高亮度的同时满足 LED 的散热需求；符合 ECE、ISO、CE；采用聚光透镜配光方案、驱动程序优化的照明系统、光线稳定；集合位置灯、近光灯和喇叭警示功能；采用高分贝陶瓷蜂鸣片，专用的驱动芯片，输出更稳定、悦耳的音质；反光片快速拆装设计。
 QD522 uses high-quality LED light source and semi-aluminum shell to ensure high brightness and meet the heat dissipation requirements; Comply with ECE and ISO; The stable lighting system optimized by condenser lens. It integrated the horn warning function, daytime running light and low beam light together; High decibel ceramic buzzer chip and special driver chip to output more stable and pleasant sound quality; Quick release and assembly design of reflector.



	QD522	QD522-2	QD522-3	QD522-4	QD522-5
标准 / Approval	ECE Class A / ISO / CE	ECE Class A / ISO / CE	ECE Class A / ISO / CE	ECE Class A / ISO / CE	ECE Class A / ISO / CE
尺寸 / Size	L69mm W65mm H108mm	L69mm W65mm H108mm	L69mm W65mm H108mm	L69mm W65mm H108mm	L69mm W65mm H108mm
重量 / Weight	115g	115g	110g	110g	110g
芯线 / Wiring	4 Pins	3 Pins	3 Pins	2 Pins	2 Pins
防水 / Waterproof	IPX5	IPX5	IPX5	IPX5	IPX5
标称电压 / Nominal Voltage	DC 12-48V	DC 12-48V	DC 6-48V	DC 6-48V	DC 6-48V / 6V
中心照度 / Center Luminance	50LUX	50LUX	50LUX	50LUX	90LUX
光源类型 / Light Source	LED	LED	LED	LED	LED
喇叭分贝 / Horn Decibel	80±5dB	×	80±5dB	×	×
喇叭电压 / Horn Voltage	DC 36-48V	×	DC 36-48V	×	×
功率 / Power	位置灯 Position beam:0.4W; 近光 Low beam:3W; 喇叭Horn:2.4W	位置灯 Position beam:0.4W 近光 Low beam:3W	近光 Low beam:3W 喇叭Horn:2.4W	3W	4W

QD470-2



MINI 造型, 全塑外壳, 采用聚光式透镜配光方案, 驱动程序优化的照明系统, 具有清晰的亮 / 暗分界, 在近距离照明范围内建立更为宽阔的光场。10 米距离处光斑中心照度达到 80Lux 以上。

MINI model, fully plastic housing, using a condensing lens light distribution scheme, optimized lighting driver system with a clear bright/dark boundary, which creating a wider light field within the close range of illumination. The illumination from the center of the light spot at a distance of 10 meters reaches above 80 Lux.



QD470-2



标准 / Approval	StVZO / ISO / CE
尺寸 / Size	L36mm W36mm H48mm
重量 / Weight	77g
芯线 / Wiring	2 Pins
防水 / Waterproof	IPX5
标称电压 / Nominal Voltage	DC 6-12V
中心照度 / Center Luminance	80LUX
光源类型 / Light Source	LED
功率 / Power	3W



QD470-4



标准 / Approval	StVZO / ISO / CE
尺寸 / Size	L36mm W36mm H48mm
重量 / Weight	40g
芯线 / Wiring	2 Pins
防水 / Waterproof	IPX5
标称电压 / Nominal Voltage	DC 6-12V / 6V / 48V
中心照度 / Center Luminance	40LUX
光源类型 / Light Source	LED
功率 / Power	2W

QD252



灯杯式配光, 反光片可自主选择是否搭配, 满足更多需求; 采用高分贝陶瓷蜂鸣片, 专用的驱动芯片, 输出更稳定、悦耳的音质; 不锈钢或喷塑支架, 长达 3 年不会生锈。

Cup light distribution, Free choice of reflectors to match or not to meet different kind of requirements ; High decibel ceramic buzzer chip and special driver chip are adopted to make a stable output and pleasant sound quality; Stainless steel or plastic bracket, which will not rust for up to 3 years.



QD252



标准 / Approval	ISO / GB / CE
尺寸 / Size	L66mm W53mm H54mm
重量 / Weight	90g
芯线 / Wiring	2 Pins / 3 Pins
防水 / Waterproof	IPX4
标称电压 / Nominal Voltage	DC 12-48V / 12V / 36V / 48V
中心照度 / Center Luminance	30LUX
光源类型 / Light Source	LED
功率 / Power	2W
喇叭分贝 / Horn Decibel	80±5dB
喇叭电压 / Horn Voltage	36-48V



QD260-3+DK156



标准 / Approval	StVZO / ISO / CE
尺寸 / Size	L55mm W47mm H47mm
重量 / Weight	120g
芯线 / Wiring	2 Pins
防水 / Waterproof	IPX5
标称电压 / Nominal Voltage	DC 12-48V
中心照度 / Center Luminance	近光 Low beam:50LUX ; 远光 High beam:100LUX
光源类型 / Light Source	LED
功率 / Power	近光 Low beam:2.5W; 远光 High beam:8.5W

QD500



复古外观设计，采用反射式自由曲面灯杯配光及驱动程序优化的照明系统、光线稳定；10米处中心照度可达40Lux、适用于助力车及滑板车；具有清晰的亮/暗分界，在近距离照明范围内建立一个良好、均匀的光场；反光片快速拆装设计。

Retro appearance design, using reflective free-form light cup lighting and driver optimized lighting system, light stability; Center illuminance up to 40Lux at 10 meters, suitable for electric bikes and scooters; With a clear bright/dark boundary, in the range of close lighting to establish a good, uniform light field; Reflector quick disassembly design.



QD500

标准 / Approval	StVZO / ECE / ISO / CE
尺寸 / Size	L36 mm W 36mm H47mm
重量 / Weight	38g
芯线 / Wiring	2 Pins
防水 / Waterproof	IPX5
标称电压 / Nominal Voltage	DC 6-20V
中心照度 / Center Luminance	40LUX
光源类型 / Light Source	LED
功率 / Power	2W

QD260



经典外观设计，全铝外壳，提供铝本色和黑色可选；采用反射式自由曲面灯杯配光及驱动程序优化的照明系统、光线稳定；侧向透光，10米处中心照度可达100Lux以上、适用于助力车及高速 E-BIKE；具有清晰的亮/暗分界，在近距离照明范围内建立一个良好、均匀的光场；反光片快速拆装设计。

Classic appearance design, all aluminum shell, available in aluminum original color and black; it uses reflective free curved surface cup light distribution and driver optimization light system, which provide a stable light transmission and side light transmission. The central illumination at 10 meter can reach more than 100lux, which is suitable for electric mopeds and high-speed E-bike; It has a clear bright / dark boundary and establishes a good and uniform light field within the close range of illumination; Quick disassembly design of reflector is available.



QD260

标准 / Approval	StVZO / ECE Class B / ISO / CE
尺寸 / Size	L55mm W47mm H47mm
重量 / Weight	120g
芯线 / Wiring	2 Pins
防水 / Waterproof	IPX5
标称电压 / Nominal Voltage	DC 6-48V
中心照度 / Center Luminance	100LUX
光源类型 / Light Source	LED
功率 / Power	近光 Low beam: 5W



QD260-2

标准 / Approval	ISO / CE
尺寸 / Size	L55mm W47mm H47mm
重量 / Weight	120g
芯线 / Wiring	2 Pins
防水 / Waterproof	IPX5
标称电压 / Nominal Voltage	DC 12-48V / 72V
中心照度 / Center Luminance	近光 Low beam:50LUX；远光 High beam:100LUX
光源类型 / Light Source	LED
功率 / Power	近光 Low beam:2.5W；远光 High beam:8.5W

带前位置灯和喇叭功能，透镜式配光，搭配高功率 LED 光源，采用了铝外壳散热，避免元件过热以及 LED 的光衰问题。安装支架通过 72 小时盐雾测试，固定方式简便、可靠，角度可调节，可搭配多种车型。

With position light and horn function, lens-type light distribution, and high-power LED light source, adopts aluminum case to dissipate heat, avoiding component overheating and LED light decay problem. The mounting bracket has passed the 72-hour salt spray test. The fixing method is simple and reliable, and the angle can be adjusted to match a variety of models.



QD228



QD228

标准 / Approval	ECE Class A \ CQC \ ISO
尺寸 / Size	L73.5mm W60mm H73.5mm
重量 / Weight	95g
芯线 / Wiring	4 Pins
防水 / Waterproof	IPX4
标称电压 / Nominal Voltage	DC 6-48V / 12V / 36V / 64V / 36-48V
中心照度 / Center Luminance	20LUX
光源类型 / Light Source	LED
功率 / Power	位置灯Position beam: 1.8W 近光灯:Low beam:2W
喇叭分贝 /Horn Decibel	80±5dB
喇叭电压 /Horn Voltage	48V



QD228-2



标准 / Approval	ISO \ CE
尺寸 / Size	L73.5mm W60mm H73.5mm
重量 / Weight	95g
芯线 / Wiring	4 Pins
防水 / Waterproof	IPX4
标称电压 / Nominal Voltage	DC 36-48V
中心照度 / Center Luminance	20LUX
光源类型 / Light Source	LED
功率 / Power	位置灯Position beam: 1.8W 近光灯:Low beam:2W
喇叭分贝 /Horn Decibel	80±5dB
喇叭电压 /Horn Voltage	36-48V



QD228-3



标准 / Approval	ISO \ CE
尺寸 / Size	L73.5mm W60mm H73.5mm
重量 / Weight	95g
芯线 / Wiring	4 Pins
防水 / Waterproof	IPX4
标称电压 / Nominal Voltage	DC 36-48V
中心照度 / Center Luminance	50LUX
光源类型 / Light Source	LED
功率 / Power	位置灯Position beam: 1.8W 近光灯:Low beam:4.5W
喇叭分贝 /Horn Decibel	80±5dB
喇叭电压 /Horn Voltage	36-48V



QD500-2



装配于车辆立管 (适合外径 44-55mm); 采用反射式自由曲面灯杯配光及驱动程序优化的照明系统、光线稳定; 具有清晰的亮 / 暗分界, 在近距离照明范围内建立一个良好、均匀的光场; 反光片超声波焊接安装; 适用电力车、折叠车、滑板车等。

Assembled on bicycle stem [suitable for diameter of 44-55mm]; The stable lighting system optimized by reflective free-form curve cup light distribution and driver; It has a clear light/dark boundary and establishes a good and uniform light field within the range of close illumination; Ultrasonic welding and installation of reflector; Applicable to pedelecs, folding bikes, scooters, etc.



标准 / Approval	StVZO / ECE / ISO / CE
尺寸 / Size	L73 mm W47.3mm H47 mm
重量 / Weight	43g
芯线 / Wiring	2 Pins
防水 / Waterproof	IPX5
标称电压 / Nominal Voltage	DC 6-20V
中心照度 / Center Luminance	40LUX
光源类型 / Light Source	LED
功率 / Power	2W

QD266-2



外形硬朗、时尚; 适用电力车、折叠车、滑板车等; 采用光学级 PMMA 透镜配光, 汽车级高功率 LED; 装配于车辆立管 (适合外径 44-55mm), 带喇叭功能。

The appearance is tough and fashionable; It is suitable for electric mopeds, folding bikes, scooters, etc.; It uses optical PMMA lens to distribute light and automotive-grade high-power LED; Assembled on vehicle standpipe [suitable for outer diameter 44-55mm], with horn function.



标准 / Approval	ISO / CE
尺寸 / Size	L73.8mm W45.9mm H90.3mm
重量 / Weight	84g
芯线 / Wiring	2 Pins / 3 Pins
防水 / Waterproof	IPX4
标称电压 / Nominal Voltage	DC 36-48V / 12-48V
中心照度 / Center Luminance	20LUX
光源类型 / Light Source	LED
功率 / Power	2.4W
喇叭分贝 /Horn Decibel	80±5dB
喇叭电压 /Horn Voltage	48V

QD213-2



复古外观设计，采用反射式自由曲面灯杯配光及驱动程序优化的照明系统、光线稳定；10米处中心照度可达40Lux、适用于电助力车及滑板车；具有清晰的亮/暗分界，在近距离照明范围内建立一个良好、均匀的光场；反光片快速拆装设计。

Retro appearance design, using reflective free-form light cup lighting and driver optimized lighting system, light stability; Center illuminance up to 40Lux at 10 meters, suitable for electric bikes and scooters; With a clear bright/dark boundary, in the range of close lighting to establish a good, uniform light field; Reflector quick disassembly design.



QD213-2



标准 / Approval	StVZO / ISO / CE
尺寸 / Size	L49mm W52mm H53mm(Without bracket)
重量 / Weight	60g
芯线 / Wiring	2 Pins
防水 / Waterproof	IPX4
标称电压 / Nominal Voltage	DC 6-48V / 72V / AC 6V
中心照度 / Center Luminance	30LUX
光源类型 / Light Source	LED
功率 / Power	1.8W

QD236

灯杯式配光，反光片可自主选择是否搭配，满足更多需求；采用高分贝陶瓷蜂鸣片，专用的驱动芯片，输出更稳定、悦耳的音质；不锈钢或喷塑支架，长达3年不会生锈。

Cup light distribution, Free choice of reflectors to match or not to meet different kind of requirements ; High decibel ceramic buzzer chip and special driver chip are adopted to make a stable output and pleasant sound quality; Stainless steel or plastic bracket, which will not rust for up to 3 years.



尺寸 / Size	L66mm W52mm H71mm (Without bracket)
重量 / Weight	85g
芯线 / Wiring	2 Pins / 3 Pins
防水 / Waterproof	IPX4
标称电压 / Nominal Voltage	DC 12-72V / DC 6V
中心照度 / Center Luminance	30LUX
光源类型 / Light Source	LED
功率 / Power	2.4W
喇叭分贝 / Horn Decibel	80±5dB
喇叭电压 / Horn Voltage	36-48V

QD139-2

采用高功率LED光源，在十米距离处光斑最大照度达到30Lux。专用的驱动芯片，输出更稳定、悦耳的音质。可选择不锈钢或电泳黑支架。

Using high-power LED light source, the maximum illuminance of the light spot at a distance of ten meters reaches 30 Lux. Dedicated driver chip for more stable and pleasant sound quality. Choice of stainless steel or electroplated black bracket.



尺寸 / Size	L63mm W66mm H52mm
重量 / Weight	85g
芯线 / Wiring	2 Pins / 3 Pins
防水 / Waterproof	IPX4
标称电压 / Nominal Voltage	DC 12-48V / 6V / 12V
中心照度 / Center Luminance	30LUX
光源类型 / Light Source	LED
功率 / Power	2.4W
喇叭分贝 / Horn Decibel	80±5dB
喇叭电压 / Horn Voltage	48V / 12V



QD238-2



标准 / Approval	ISO / CE
尺寸 / Size	L78mm W52mm H42mm
重量 / Weight	62g
芯线 / Wiring	2 Pins
防水 / Waterproof	IPX4
标称电压 / Nominal Voltage	DC 6V
中心照度 / Center Luminance	30LUX
光源类型 / Light Source	LED
功率 / Power	近光灯:Low beam: 1.8W



QD197



灯杯式配光，搭配高功率 LED 光源，采用了铝制散热元件，避免元器件过热以及高功率 LED 的光衰问题。安装支架通过 72 小时盐雾测试，固定方式简便、可靠，角度可调节，可搭配多种车型。
Lamp-type light distribution, with high-power LED light source, adopts aluminum heat-dissipating components to avoid overheating of components and light attenuation problems of high-power LEDs. The mounting bracket has passed the 72-hour salt spray test. The fixing method is simple and reliable. The angle can be adjusted to match a variety of models.

标准 / Approval	StVZO
尺寸 / Size	L46mm W49mm H65mm
重量 / Weight	56g
芯线 / Wiring	2 Pins
防水 / Waterproof	IPX4
标称电压 / Nominal Voltage	DC 6-48V / AC6V
中心照度 / Center Luminance	30LUX
光源类型 / Light Source	LED
功率 / Power	1.8W



QD199-2



按照新国标配光要求，采用光学透镜；采用高功率 LED 光源，在十米距离处光斑最大照度达到 20Lux。专用的驱动芯片，输出更稳定、悦耳的音质。可选择不锈钢或电泳黑支架。
According to the new national standard light distribution requirements, optical lenses are used; High-power LED light sources are used, and the maximum spot illumination at a distance of ten meters reaches 20 Lux. Dedicated driver chip for more stable and pleasant sound quality. Choice of stainless steel or electrophoretic black bracket.

标准 / Approval	ISO / GB / CE
尺寸 / Size	L75mm W56mm H69.2mm
重量 / Weight	65g
芯线 / Wiring	2 Pins / 3 Pins
防水 / Waterproof	IPX4
标称电压 / Nominal Voltage	DC 36-48V
中心照度 / Center Luminance	20LUX
光源类型 / Light Source	LED
功率 / Power	2.4W
喇叭分贝 /Horn Decibel	80±5dB
喇叭电压 /Horn Voltage	48V



QD213



灯杯式配光，搭配高功率 LED 光源，采用了铝制散热元件，避免元器件过热以及高功率 LED 的光衰问题。安装支架通过 72 小时盐雾测试，固定方式简便、可靠，角度可调节，可搭配多种车型。
Lamp cup type light distribution,with high power LED light source,the use of aluminum cooling elements,to avoid overheating components and high power LED light failure.The mounting bracket has passed the 72-hour salt spray test.The fixing method is simple and reliable,and the Angle can be adjusted.It can be matched with a variety of models.

标准 / Approval	CE
尺寸 / Size	L49mm W52mm H53mm (Without bracket)
重量 / Weight	60g
芯线 / Wiring	2 Pins
防水 / Waterproof	IPX4
标称电压 / Nominal Voltage	DC 6-48V / AC 6V
中心照度 / Center Luminance	30LUX
光源类型 / Light Source	LED
功率 / Power	1.8W



QD262

外形硬朗、时尚、小巧，可以适配更多车型。双透镜设计，密封防水密封胶工艺，防水等级达到 IPX6。
The shape is tough, stylish and compact, which can be adapted to more models. Double lens design, waterproof sealing technology, waterproof grade up to IPX6.

尺寸 / Size	L44mm W63mm H40mm
重量 / Weight	46g
芯线 / Wiring	2 Pins
防水 / Waterproof	IPX6
标称电压 / Nominal Voltage	DC 36-48V / 6V
中心照度 / Center Luminance	15LUX
光源类型 / Light Source	LED
功率 / Power	1.5W



QD329



面板前大灯，高亮导光条日行灯。轻摩远近光切换，电自大灯符合最新国标。
The headlights on the front panel and the daytime running lights with bright light guide strips. Switch between light and far and near light, electric self-headlights comply with the latest national standard.

标准 / Approval	3C / GB / CE
尺寸 / Size	L154mm W154mm H100mm
重量 / Weight	250g
芯线 / Wiring	4 Pins
防水 / Waterproof	IPX5
标称电压 / Nominal Voltage	DC 12V / DC 48V
中心照度 / Center Luminance	近光 Low beam: 60LUX; 远光 High beam: 230LUX
光源类型 / Light Source	LED
功率 / Power	近光 Low beam: 6W ; 远光 High beam: 6W ; 位置灯 Position beam:1.5W

WD626



简约且大气的设计，具有位置灯和制动灯两种功能，新颖的光学设计，全密封防水设计，更加安全可靠，目前有两个版本可选，满足整车场对不同功能及成本的需求。
A simple and stylish design with both position light and brake light functions, featuring an innovative optical design and fully sealed waterproof construction for enhanced safety and reliability. Currently, there are two versions available to meet different functional and cost requirements for the entire vehicle.

NEW



WD626

WD626-2

尺寸 / Size	L108mm W26mm H20mm	L108mm W26mm H20mm
重量 / Weight	35g	35g
芯线 / Wiring	3 Pins	3 Pins
防水 / Waterproof	IPX5	IPX5
装配螺钉间距 / Assemble Dimension	50mm/80mm	50mm/80mm
电压 / Voltage	DC 12V	DC 48V
光源类型 / Light Source	LED	LED
可视角度 / Visual Angle	220°	220°
显示效果 / Display Effect	常亮 NO	常亮 NO
产品功能 / Function	位置灯 Position lamp + 刹车灯 Stop lamp	位置灯 Position lamp + 刹车灯 Stop lamp + 转向灯 Turning light
功率 / Power	位置灯 Position lamp: 1.7W 刹车灯 Stop lamp: 1W	位置灯 Position lamp: 1W 刹车灯 Stop lamp: 1.5W 转向灯 Turn signal amp: 1.5W

WD558-9



自动刹车感应功能，感应到制动后，马上激活至刹车灯模式，提示后方注意，提高安全性；设计富有创意且简约，一款高性能的后置灯和制动灯组合；采用新型的、优化的 COB LED 技术，拥有非常强大的安全警示功能。

Automatic brake sensing function, detecting braking, it instantly activates brake light mode to alert rearward traffic; Design is creative and simple, It is a high-performance combination of rear position light and brake light; Using a new and optimized COB LED technology, with a very powerful safety warning function.

NEW



WD558

WD558-2

WD558-9

标准 / Approval	StVZO / ISO / CPSC / CE	StVZO / ISO / CPSC / CE	StVZO / ISO / CE
尺寸 / Size	L110mm W36mm H16mm	L110mm W36mm H16mm	L110mm W36mm H16mm
重量 / Weight	43g	43g	43g
芯线 / Wiring	3 Pins	2 Pins	4 Pins
防水 / Waterproof	IPX5	IPX5	IPX5
装配螺钉间距 / Assemble Dimension	50mm/80mm	50mm/80mm	50mm/80mm
电压 / Voltage	DC 6-60V	DC 6-60V	DC 6-48V
光源类型 / Light Source	COB+LED	COB	COB+LED
可视角度 / Visual Angle	220°	220°	220°
显示效果 / Display Effect	常亮 NO	常亮 NO	常亮 NO
反射器标准 / Reflector Standard	Z-mark / ISO / CPSC	Z-mark / ISO / CPSC	Z-mark / ISO
产品功能 / Function	位置灯 Position lamp + 刹车灯 Stop lamp	位置灯 Position lamp	位置灯 Position lamp + 刹车灯 Stop lamp
功率 / Power	位置灯 Position lamp: 1.8W 刹车灯 Stop lamp: 2W	2W	位置灯 Position lamp: 1.8W 刹车灯 Stop lamp: 2W

WD568



现代的外观与高效的信号效果相结合；新颖的光学设计，强大而均匀的光线，确保最大限度的注意力；易于安装在行李架上，安装孔间距为 50 mm 或 80 mm；可视角度超 220°；全密封防水设计，更加安全可靠。

The combination of modern appearance and efficient signal; Innovative optical design, powerful and uniform lighting, ensuring maximum attention; Easy to install on luggage racks, with a hole spacing of 50 mm or 80 mm; Visual angle exceeding 220 °; Fully sealed waterproof design, safer and more reliable.



NEW



WD568

WD568-3

标准 / Approval	ISO / CPSC / CE	ECE
尺寸 / Size	L125mm W27mm H27.5mm	L125mm W27mm H27.5mm
重量 / Weight	25g	25g
芯线 / Wiring	5 Pins	3 Pins
防水 / Waterproof	IPX5	IPX5
装配螺钉间距 / Assemble Dimension	50mm/80mm	50mm/80mm
电压 / Voltage	DC 12V / 48V	DC 12V
光源类型 / Light Source	LED	LED
可视角度 / Visual Angle	220°	220°
显示效果 / Display Effect	常亮 NO / 闪烁 Flash	常亮 NO
反射器标准 / Reflector Standard	CPSC / ISO	x
产品功能 / Function	位置灯 Position lamp + 刹车灯 Stop lamp + 转向灯	位置灯 Position lamp + 刹车灯 Stop lamp
功率 / Power	Turn signal lamp 位置灯 Position lamp: 0.85W 刹车灯 Stop lamp: 1.1W 转向灯 Turn signal amp: 1.1W	位置灯 Position lamp: 1W 刹车灯 Stop lamp: 1.3W

WD216



高功率 LED 提供光源，配置精密光导条；全密封防水设计，更加安全可靠。

High power LED provides light source, equipped with precision light guide strip; Fully sealed waterproof design, more secure and reliable.



WD216

标准 / Approval	StVZO / ECE / CE
反射器标准 / Reflector Standard	ECE / StVZO
尺寸 / Size	L90mm W40mm H16mm
重量 / Weight	46g
芯线 / Wiring	2 Pins
防水 / Waterproof	IPX4
装配螺钉间距 / Assemble Dimension	50mm
电压 / Voltage	DC 6-48V / DC 36V / AC 6V
光源类型 / Light Source	LED
可视角度 / Visual Angle	220°
显示效果 / Display Effect	常亮 NO
产品功能 / Function	位置灯 Position lamp
功率 / Power	0.5W



单套大功率 LED 光源、导光条设计通过精确的光学设计，均匀的透射光波导经 Z 批准的 Integrated 反射镜，遵守 GB/T 31887.1-2019 符合 ISO 6742-2015, 220°超宽可视角度。
The single set of high-power LED light source and light guide bar design through precise optical design, uniform transmission light guide approved by Z Integrated reflector, comply with GB/T 31887.1-2019 conform to ISO 6742-2015, 220 ° super wide viewing angle.



WD312

标准 / Approval	STVZO / CQC / CE
反射器标准 / Reflector Standard	ECE / STVZO / CPSC
尺寸 / Size	L100mm W47mm H34mm
重量 / Weight	42g
芯线 / Wiring	2 Pins
防水 / Waterproof	IPX4
装配螺钉间距 / Assemble Dimension	50mm
电压 / Voltage	DC 6-48V / AC 6V / DC 72V
光源类型 / Light Source	LED
可视角度 / Visual Angle	220°
显示效果 / Display Effect	常亮 NO
产品功能 / Function	位置灯 Position lamp
功率 / Power	0.6W



WD300

外观时尚，弯月形位置灯，美观同时提供优良警示作用；高亮度红色刹车灯，骑行更安全；全密封防水设计，更加安全可靠；集位置灯、刹车灯和牌照灯于一体。
Stylish appearance, meniscus-shaped position light, beautiful and provide excellent warning; High-brightness red brake light, safer riding; Fully sealed waterproof design, more secure and reliable; Set position light, brake light and license plate light in one.

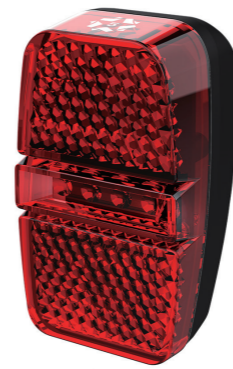


标准 / Approval	ECE / ISO / CE
尺寸 / Size	L120mm W60mm H35mm
重量 / Weight	92g
芯线 / Wiring	3 Pins
防水 / Waterproof	IPX4
装配螺钉间距 / Assemble Dimension	50 / 80mm
电压 / Voltage	DC 12V / 36-48V
光源类型 / Light Source	LED
可视角度 / Visual Angle	220°
显示效果 / Display Effect	常亮 NO
产品功能 / Function	位置灯 Position lamp + 刹车灯 Stop lamp
功率 / Power	位置灯 Position lamp: 3W; 刹车灯 Stop lamp: 1.5W

WD502



外形灵巧、时尚；符合 CE、ECE 标准的自行车、滑板车泥板尾灯，直流电源供电；LED 光源，辅以全密封结构，产品 IPX5 的防尘防水能力；采用优质模具钢材及高精度工艺，确保塑件配合精度及表面皮纹及细节优良；可视角超过 220°。



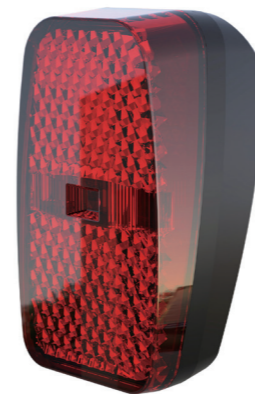
Smart and fashionable appearance; Suitable on the bicycle and scooters with, ECE and ISO standards. It is powered by DC power and uses LED light source and fully sealed structure. The dustproof and waterproof capability is IPX5; Adopt high-quality die steel and high-precision technology to ensure the fitting accuracy of plastic parts and excellent surface texture and details; The angle of view is more than 220 °.

标准 / Approval	ECE / CE
尺寸 / Size	L25mm W31mm H52mm
重量 / Weight	34g
芯线 / Wiring	3 Pins
防水 / Waterproof	IPX5
电压 / Voltage	DC 6V / 12V
光源类型 / Light Source	LED
可视角度 / Visual Angle	220°
显示效果 / Display Effect	常亮 NO
产品功能 / Function	位置灯 Position lamp + 刹车灯 Stop lamp
功率 / Power	位置灯 Position lamp: 0.2W; 刹车灯 Stop lamp: 1.8W

WD490



符合 GB / T 31887.1-2019O 标准的自行车、滑板车泥板尾灯，直流电源供电；LED 光源，辅以全密封结构，产品 IPX5 的防尘防水能力；采用优质模具钢材及高精度工艺，确保塑件配合精度及表面皮纹及细节优良。Bicycle and scooter mud taillights in line with GB/T 31887.1-2019O standard, powered by DC power supply; LED light source, with fully sealed structure, the product IPX5 dustproof and waterproof ability; Adopt high quality mould steel and high precision technology to ensure the matching precision of plastic parts and excellent surface texture and details.



标准 / Approval	CQC / ISO / CE
尺寸 / Size	L25mm W31mm H52mm
重量 / Weight	34g
芯线 / Wiring	2 Pins
防水 / Waterproof	IPX5
电压 / Voltage	DC 6V-12V / 36-48V
光源类型 / Light Source	LED
可视角度 / Visual Angle	220°
显示效果 / Display Effect	常亮 NO
产品功能 / Function	位置灯 Position lamp
功率 / Power	位置灯 Position lamp: 0.9W

WD220



三组高功率 LED 提供光源，配置精密光导条；全密封防水设计，更加安全可靠。

Three sets of high-power LEDs provide light sources and are equipped with precision light guide strips; Fully sealed waterproof design, more secure and reliable.



WD220

WD220-2

标准 / Approval	CQC / CE	CE
反射器标准 / Reflector Standard	CPSC	CPSC
尺寸 / Size	L95mm W45mm H19mm	L95mm W45mm H19mm
重量 / Weight	46g	46g
芯线 / Wiring	2 Pins	2 Pins
防水 / Waterproof	IPX4	IPX4
电压 / Voltage	2*3A 干电池	DC 6-48V / AC 6V
装配螺钉间距 / Assemble Dimension	50mm	50mm
光源类型 / Light Source	LED	LED
可视角度 / Visual Angle	220°	220°
显示效果 / Display Effect	常亮 NO / 闪烁 Flash	常亮 NO / 闪烁 Flash
产品功能 / Function	位置灯 Position lamp	位置灯 Position lamp
功率 / Power	0.8W	0.8W



WD430

自行车、滑板车泥板尾灯，直流电源供电；LED 光源，辅以全密封结构，产品 IPX4 的防尘防水能力；采用优质模具钢材及高精度工艺，确保塑件配合精度及表面皮纹及细节优良。

Bicycles and scooters taillights are powered by DC power. The LED light source is supplemented by a fully sealed structure. The product is IPX4 dustproof and waterproof. It uses high-quality mold steel and high-precision technology to ensure the precision of plastic components Excellent surface texture and detail.

尺寸 / Size	L40mm W46mm H35mm
重量 / Weight	24g
芯线 / Wiring	2 Pins
防水 / Waterproof	IPX4
电压 / Voltage	DC 6-48
光源类型 / Light Source	LED
可视角度 / Visual Angle	220°
显示效果 / Display Effect	常亮 NO
产品功能 / Function	位置灯 Position lamp
功率 / Power	位置灯 Position lamp: 0.5W

WD226

外形迷你、精致，全铝外壳，全密封防水设计。

Mini and exquisite, full aluminum casing, fully sealed and waterproof design.



尺寸 / Size	L63.7mm W15.7mm H13mm
重量 / Weight	20g
芯线 / Wiring	2 Pins
防水 / Waterproof	IPX4
电压 / Voltage	48V / 5V / 12V
光源类型 / Light Source	LED
可视角度 / Visual Angle	220°
显示效果 / Display Effect	常亮 NO
产品功能 / Function	位置灯 Position lamp
功率 / Power	位置灯 Position lamp: 0.8W

WD332



高功率 LED 提供光源，配置精密光导条；全密封防水设计，更加安全可靠；集刹车灯、转向灯于一体，功能强大。

The light source provided by a powerful LED, and it equipped with the precise light guide; Fully sealed waterproof design, and more safe and reliable; Powerful function with the integrated braking and turning light.

REAR LIGHT



WD332

标准 / Approval	ISO \ CE	WD332-2	ISO \ CE	WD332-3	ISO \ CE
尺寸 / Size	L100mm W36mm H34mm	L100mm W36mm H34mm	L100mm W36mm H34mm	L100mm W36mm H34mm	
重量 / Weight	65g	65g	65g	65g	
芯线 / Wiring	2 Pins	2 Pins / 3 Pins	2 Pins / 3 Pins	2 Pins / 3 Pins	
防水 / Waterproof	IPX4	IPX4	IPX4	IPX4	
电压 / Voltage	DC 36-48V	DC 36-48V	DC 12V	DC 12V	
装配螺钉间距 / Assemble Dimension	50mm / 80mm	50mm / 80mm	50mm / 80mm	50mm / 80mm	
光源类型 / Light Source	LED	LED	LED	LED	
可视角度 / Visual Angle	220°	220°	220°	220°	
显示效果 / Display Effect	常亮 NO	常亮 NO	常亮 NO	常亮 NO	
产品功能 / Function	位置灯 Position lamp	位置灯 Position lamp + 刹车灯 Stop lamp	位置灯 Position lamp+ 刹车灯 Stop lamp+ 转向灯 Turn signal lamp	位置灯 Position lamp+ 刹车灯 Stop lamp+ 转向灯 Turn signal lamp	
功率 / Power	位置灯 Position lamp :1.5W	位置灯 Position lamp:1.5W ; 刹车灯 Stop lamp:2.4W	位置灯 Position lamp:1.5W ; 刹车灯 Stop lamp:2.4W; 转向灯 Turn signal lamp:2.4W	位置灯 Position lamp:1.5W ; 刹车灯 Stop lamp:2.4W; 转向灯 Turn signal lamp:2.4W	

WD330



外形迷你、精致，全铝外壳，全密封防水设计；可搭配 WD216-RR 反射器组件。

Mini and exquisite, full aluminum casing, fully sealed and waterproof design. WD216-RR reflector assembly is matchable.

REAR LIGHT



WD330

标准 / Approval	StVZO / ECE / ISO / 3C / CE
尺寸 / Size	L62mm W34mm H16mm
重量 / Weight	70g
芯线 / Wiring	3 Pins
防水 / Waterproof	IPX5
装配螺钉间距 / Assemble Dimension	50mm
电压 / Voltage	DC 6-12V
光源类型 / Light Source	LED
可视角度 / Visual Angle	220°
显示效果 / Display Effect	常亮 NO
产品功能 / Function	位置灯 Position lamp + 刹车灯 Stop lamp
功率 / Power	位置灯 Position lamp: 0.7W; 刹车灯 Stop lamp: 3W

WD242

符合 GB 标准的自行车泥板尾灯，直流电源供电；LED 光源，辅以全密封结构，产品 IPX4 的防尘防水能力；采用优质模具钢材及高精度工艺，确保塑件配合精度及表面皮纹及细节优良。

Bike mud pad tail lamp that complies with GB standards, DC power supply; LED light source, supplemented by a fully sealed structure, IPX4 dust and water resistance; High-quality mold steel and high-precision technology to ensure the precision of plastic parts and surface texture and details excellent.



WD246

外观时尚，两颗高功率 LED 提供光源；采用光导设计，获得均匀透光的导光效果；全密封防水设计，更加安全可靠；尾灯结合电池仓一体化设计，安装于衣架处，档次更高。

Fashionable appearance, two high-power LEDs provide light source; adopt light guide design to obtain uniform light transmission effect; fully sealed and waterproof design, more secure and reliable; Tail lamp combined with battery compartment integrated design, installed on the hanger, higher grade



反射器标准 / Reflector Standard	ECE / StVZO
尺寸 / Size	L29mm W60mm H43mm
重量 / Weight	53g
芯线 / Wiring	2 Pins
防水 / Waterproof	IPX4
电压 / Voltage	DC 6-12V
光源类型 / Light Source	LED
可视角度 / Visual Angle	220°
显示效果 / Display Effect	常亮 NO
产品功能 / Function	位置灯 Position lamp
功率 / Power	位置灯 Position lamp: 0.5W

WD186

高亮度红色环状刹车灯，为骑行提供安全可靠的预警提示；全密封防水设计，更加安全可靠；集位置灯、刹车灯和转向灯于一体。

High brightness red ring brake lights provide safe and reliable warning hints for riding; Fully sealed waterproof design, more safe and reliable; Integrated position light, brake light and turn signal.



尺寸 / Size	L124mm W32mm H52mm
重量 / Weight	105g
芯线 / Wiring	3 Pins
防水 / Waterproof	IPX4
电压 / Voltage	DC 48V
装配螺钉间距 / Assemble Dimension	50 / 80mm
光源类型 / Light Source	LED
可视角度 / Visual Angle	220°
显示效果 / Display Effect	常亮 NO
产品功能 / Function	位置灯 Position lamp + 刹车灯 Stop lamp
功率 / Power	位置灯 Position lamp: 0.25W; 刹车灯 Stop lamp: 0.65W

WD242



标准 / Approval	CE
尺寸 / Size	L29mm W60mm H43mm
重量 / Weight	53g
芯线 / Wiring	3 Pins
防水 / Waterproof	IPX4
电压 / Voltage	DC 12-48V
光源类型 / Light Source	LED
可视角度 / Visual Angle	220°
显示效果 / Display Effect	常亮 NO
产品功能 / Function	位置灯 Position light + 刹车灯 Stop lamp
功率 / Power	位置灯 Position light: 0.8W; 刹车灯 Stop lamp: 2W



WD400



外观时尚，“U”形位置灯，美观同时提供优良警示作用；高亮度红色刹车灯，骑行更安全；全密封防水设计，更加安全可靠；集位置灯、刹车灯和牌照灯于一体。

Stylish appearance, "U"-shaped position light, beautiful and provide excellent warning effect; High-brightness red brake lights, safer riding; Fully sealed waterproof design, more secure and reliable; Set position lights, brake lights, and license plate lights in one.

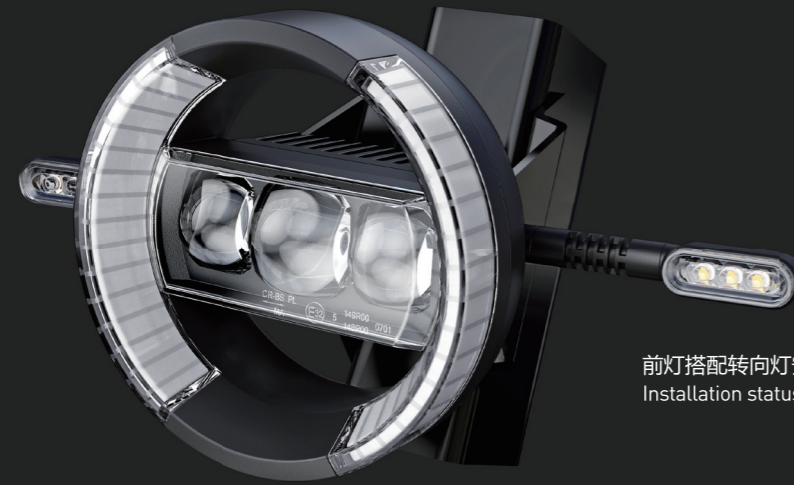
标准 / Approval	ECE / ISO / CE
尺寸 / Size	L142mm W50mm H35mm
重量 / Weight	107g
芯线 / Wiring	3 Pins
防水 / Waterproof	IPX4
装配螺钉间距 / Assemble Dimension	50 / 80mm
电压 / Voltage	DC 12V / 36-48V
光源类型 / Light Source	LED
可视角度 / Visual Angle	220°
显示效果 / Display Effect	常亮 NO
产品功能 / Function	位置灯 Position light + 刹车灯 Stop lamp
功率 / Power	位置灯 Position light: 1.1W; 刹车灯 Stop lamp: 1.3W



TURNING LIGHT

ZXD007

转向灯



前灯搭配转向灯安装状态
Installation status of headlights with turn signals



尾灯搭配转向灯安装状态
Installation status of tail lights with turn signals

控制开关安装预留区域
Pre-defined area for control switches



ZXD007: 开启状态 (ON status)

NEW



ZXD007 (螺纹款)



ZXD007 (卡扣款)



ZXD007 (把横款)



标准 / Approval	ECE / ISO / 3C / CE
尺寸 / Size	L104.5mm W16mm H17mm
重量 / Weight	20g
芯线 / Wiring	2 Pins
防水 / Waterproof	IPX5
材料 / Material	PC/ABS
标称电压 / Nominal Voltage	DC 12V
光源类型 / Light Source	LED
功率 / Power	1W
显示效果 / Display Effect	常亮 NO / 闪烁 Flash

TURNING LIGHT

TURNING LIGHT

PZD001

NEW



PZD001



标准 / Approval	ECE / DOT / 3C	芯线 / Wiring	2 Pins
尺寸 / Size	L51.5mm W15.8mm H12.7mm	标称电压 / Nominal Voltage	DC 12V
材料 / Material	PC/ABS	光源类型 / Light Source	LED
重量 / Weight	6g	功率 / Power	1W
防水 / Waterproof	IPX5	显示效果 / Display Effect	常亮 NO



ZXD002



标准 / Approval	ECE / ISO / CE			
尺寸 / Size	L56mm W70mm H60mm			
芯线 / Wiring	2 Pins	2 Pins	3 Pins	3 Pins
重量 / Weight	43g			
标称电压 / Nominal Voltage	DC 12V / 36V	DC 5V	DC 48V	DC 12V
防水 / Waterproof	IPX5			
颜色 / Colour	黄色 / 绿色	绿色	黄色	黄色 / 绿色
功率 / Power	2W			
显示效果 / Display Effect	常亮 NO / 闪烁 Flash	常亮 NO	常亮 NO	常亮 NO
光源类型 / Light Source	LED			



ZX255



标准 / Approval	CE	芯线 / Wiring	2 Pins
尺寸 / Size	L105mm W34mm H35mm	标称电压 / Nominal Voltage	DC 12V / 48V
材料 / Material	PC/ABS	光源类型 / Light Source	LED
重量 / Weight	50g	功率 / Power	2W
防水 / Waterproof	IPX5	显示效果 / Display Effect	常亮

ZX255-2



标准 / Approval	CE	芯线 / Wiring	2 Pins
尺寸 / Size	L135mm W34mm H35mm	标称电压 / Nominal Voltage	DC 12V / 48V
材料 / Material	PC/ABS	光源类型 / Light Source	LED
重量 / Weight	50g	功率 / Power	2W
防水 / Waterproof	IPX5	显示效果 / Display Effect	常亮



ZX367



标准 / Approval	CE	芯线 / Wiring	2 Pins
尺寸 / Size	L132mm W25mm H37mm	标称电压 / Nominal Voltage	DC 48V
材料 / Material	PC/ABS	光源类型 / Light Source	LED
重量 / Weight	50g	功率 / Power	2W
防水 / Waterproof	IPX5	显示效果 / Display Effect	闪烁 Flash



ZX367-3L/R



标准 / Approval	CE	芯线 / Wiring	2 Pins
尺寸 / Size	L132mm W25mm H37mm	标称电压 / Nominal Voltage	DC 12V
材料 / Material	PC/ABS	光源类型 / Light Source	LED
重量 / Weight	50g	功率 / Power	2W
防水 / Waterproof	IPX5	显示效果 / Display Effect	常亮 NO



REFLECTOR

BRACKET MODEL	QD238-FR	QD213-2-FR	QD228-FR	QD197-FR	QD500-FR	RR001	RR002	FR001	FR002	FR002-2
LIGHT MODEL										
APPROVAL	ISO/E1A	ISO/E1A/StVZO	ISO/E1A/CPSC	E1A/StVZO	ISO/E1A/StVZO	E1A / Z	StVZO/ISO/CE	ISO/E1A/StVZO	ISO/CPSC	ISO/CPSC
QD260	•		•		•			•	•	•
QD260-2	•		•		•			•	•	•
QD213-2		•	•		•			•	•	•
QD240		•	•		•			•	•	•
QD500					•					
QD228	•							•		
QD228-2	•		•		•			•	•	•
QD252		•	•						•	•
QD139-2			•						•	•
QD236			•		•				•	•
QD197			•	•	•				•	•
QD199-2			•		•				•	•
QD151			•		•				•	•
QD266-2										
QD213			•						•	•
QD262										
QD472										
QD522			•					•	•	•
QD526			•						•	•
WD330						•				
QD470-2					•			•	•	•
QD470-4					•			•	•	•
WD568							•			



LIGHT BRACKET

ZJ052 ZJ052 装配图示



ZJ025 ZJ025 装配图示



用于前照灯和自行车把横的固定，安装方便快捷，让夜间骑行更加安全。可以适配 31.8, 30.8, 28.6 三种把横管尺寸。

It is used to fix the headlamp and bicycle handle, which is convenient and fast to install, making the riding safely in the night. It can be adjusted to 31.8mm, 30.8mm and 28.6mm handle bars.

ZJ050 ZJ050 装配图示



用于尾灯和转向灯固定，安装方便快捷，让夜间骑行更加安全。

It is used to fix the rear light and turning light, which is convenient and fast to install, making the riding safely in the night.

LIGHT BRACKET

BRACKET MODEL	QD115 BRACKET	QD151 BRACKET	QD197 LONG BRACKET	QD197 SHORT BRACKET	QD113 BASKET LIGHTS BRACKET	QD213 BASKET LIGHTS BRACKET	QD262 BASKET LIGHTS BRACKET	QD302 BASKET LIGHTS BRACKET	QD472-08 BRACKET	ZJ001	ZJ002	ZJ003	ZJ004
LIGHT MODEL													
QD139-2	•	•	•	•						•	•	•	
QD151	•	•	•	•						•	•	•	
QD197	•	•	•	•						•	•	•	
QD199-2	•	•	•	•						•	•	•	
QD213-2	•	•	•	•						•	•	•	
QD228	•	•	•	•						•	•	•	
QD228-2	•	•	•	•						•	•	•	
QD236	•	•	•	•						•	•	•	
QD238	•	•	•	•						•	•	•	
QD240	•	•	•	•						•	•	•	
QD252	•	•	•	•						•	•	•	
QD260	•	•	•	•						•	•	•	
QD260-2	•	•	•	•						•	•	•	
QD213					•	•	•	•					
QD262					•	•	•	•					
QD500	•	•	•	•						•	•	•	
QD472									•				
QD522	•	•	•	•						•	•	•	
QD526	•	•	•	•						•	•	•	
QD560													
QD329													
QD562	•	•	•	•								•	
QD563													
QD576	•	•	•	•						•	•	•	
QD598	•	•	•	•						•	•	•	
QD598-2	•	•	•	•						•	•	•	
QD622	•	•	•	•						•	•	•	
QD472-4									•				
WD128-2													•
WD186													•
WD216													•
WD220													•
WD220-2													•
WD226													
WD242													
WD246													
WD300													•
WD312													•
WD330													•
WD332													•
WD430													
WD490													
WD502													
WD558													•
WD558-2													•
WD568													•
WD568-2													•
WD568-3													•
WD626													•
WD558-9													•
ZXD002													
ZXD255													
ZXD007													
ZXD007 卡扣款													
PZD001													
ZXD367-3													

LIGHT BRACKET

BRACKET MODEL	ZJ005	ZJ006	ZJ007	ZJ008	ZJ010	ZJ013	ZJ015	ZJ016	ZJ018	ZJ019	PZZJ001	ZJ020	ZJ021
LIGHT MODEL													
QD139-2			•		•			•	•	•		•	
QD151			•		•			•	•	•		•	
QD197			•		•			•	•	•		•	
QD199-2			•		•			•	•	•		•	
QD213-2			•		•			•	•	•		•	
QD228			•		•			•	•	•		•	
QD228-2			•		•			•	•	•		•	
QD236			•		•			•	•	•		•	
QD238			•		•			•	•	•		•	
QD240			•		•			•	•	•		•	
QD252			•		•			•	•	•		•	
QD260			•		•			•	•	•		•	
QD260-2			•		•			•	•	•		•	
QD213													
QD470						•							
QD500			•		•			•	•	•		•	
QD472				•									
QD522			•		•			•	•	•		•	
QD526			•		•			•	•	•		•	
QD560													
QD329													
QD562			•	•	•			•	•	•		•	
QD563													
QD576			•		•			•	•	•		•	
QD598			•		•			•	•	•		•	
QD598-2			•		•			•	•	•		•	
QD622			•		•			•	•	•		•	
QD472-4				•									
WD128-2												•	
WD186												•	
WD216												•	
WD220												•	
WD220-2												•	
WD226													
WD242													
WD246													
WD300												•	
WD312												•	
WD330												•	
WD332												•	
WD430													
WD490													
WD502													
WD558												•	
WD558-2												•	
WD568												•	
WD568-2												•	
WD568-3												•	
WD626												•	
WD558-9												•	
ZXD002	•	•											
ZXD255	•	•											
ZXD007	•	•											
FR002													•
PZD001													
ZXD367-3	•	•											

LIGHT BRACKET

BRACKET MODEL	ZJ022	ZJ023	ZJ025	ZJ026	ZJ027	ZJ028	ZJ029	ZJ030	ZJ032	ZJ035	QD560-06	ZJ037	ZJ038
LIGHT MODEL													
QD139-2	•	•	•	•		•	•	•		•		•	
QD151	•	•	•	•		•	•	•		•		•	
QD197	•	•	•	•		•	•	•		•		•	
QD199-2	•	•	•	•		•	•	•		•		•	
QD213-2	•	•	•	•		•	•	•		•		•	
QD228	•	•	•	•		•	•	•		•		•	
QD228-2	•	•	•	•		•	•	•		•		•	
QD236	•	•	•	•		•	•	•		•		•	
QD238	•	•	•	•		•	•	•		•		•	
QD240	•	•	•	•		•	•	•		•		•	
QD252	•	•	•	•		•	•	•		•		•	
QD260	•	•	•	•		•	•	•		•		•	
QD260-2	•	•	•	•		•	•	•		•		•	
QD213													
QD262													
QD500	•	•	•	•		•	•	•		•		•	
QD472													
QD522	•	•	•	•		•	•	•		•		•	
QD526	•	•	•	•		•	•	•		•		•	
QD560											•		•
QD329					•								
QD562			•	•		•	•	•		•			
QD563											•		•
QD576	•	•	•	•		•	•	•		•		•	
QD598	•	•	•	•		•	•	•		•		•	
QD598-2	•	•	•	•		•	•	•		•		•	
QD622	•	•	•	•		•	•	•		•		•	
QD472-4													
WD128-2													
WD186													
WD216													
WD220													
WD220-2													
WD226													
WD242													
WD246													
WD300													
WD312													
WD330													
WD332													
WD430													
WD490													
WD502													
WD558													
WD558-2											•	•	
WD568											•	•	
WD568-2											•	•	
WD568-3											•	•	
WD626													
WD558-9											•	•	
ZXD002													
ZXD255													
ZXD007													
ZXD007 卡扣款											•	•	
PZD001													
ZXD367-3									•				

LIGHT BRACKET

BRACKET MODEL	ZJ040	ZJ043	ZJ045	ZJ047	ZJ049	ZJ050	ZJ050-2	ZJ051	ZJ228-13	ZJ033	ZJ052
LIGHT MODEL											
QD139-2	•				•			•	•		
QD151	•				•			•	•		
QD197	•				•			•	•		
QD199-2	•				•			•	•		
QD213-2	•				•			•	•		
QD228	•				•			•	•		
QD228-2	•				•			•	•		
QD236	•				•			•	•		
QD238	•				•			•	•		
QD240	•				•			•	•		
QD252					•			•	•	•	
QD260	•				•			•			
QD260-2	•				•			•			
QD213											
QD262											
QD500	•				•			•	•		
QD472											
QD522	•				•			•	•		
QD526	•		•		•			•			
QD560				•							•
QD329											
QD562	•							•	•		
QD563				•							•
QD576	•				•			•	•		
QD598	•				•			•	•		
QD598-2	•				•			•	•		
QD622	•				•			•	•		
QD472-4											
WD128-2											
WD186											
WD216											
WD220											
WD220-2											
WD226											
WD242											
WD246											
WD300											
WD312											
WD330											
WD332											
WD430											
WD490											
WD502											
WD558											
WD558-2						•	•				
WD568						•	•				
WD568-2						•	•				
WD568-3						•	•				
WD626											
WD558-9						•	•				
ZXD002											
ZXD255											
ZXD007											
ZXD007 卡扣款						•	•				
PZD001								•			
FR002-2		•									



关注我们

建德市五星车业有限公司

JIANDE WUXING BICYCLE CO., LTD.

地址：中国浙江省建德市梅城镇城南工业功能区众悦路1号
ADD: No.1 Zhongyue Road, Chengnan Industrial Zone, Meicheng Town, Jiande City, Zhejiang Province.China
TEL: 86(0)571-5831 9944
FAX: 86(0)571-5831 9948

GERMAN SUBSIDIARY:
Starunion E-Bike Components GmbH
Am Sägewerk 1 | 55124 | Mainz | Germany
TEL: + 49 (0) 6131 5866439
Mobile: + 49(0)172 2329066

Email: service@star-union.net
info@star-union.net
Web: <https://www.star-union.net>



电动两轮零件专家